

# PEMCO®

## A-LINE™

1-1/4" Wide Casters, Wheels and Accessories; Up to 350 lbs. Capacity

Pages 2-5



## E-LINE

2" Wide Casters, Wheels and Accessories

Pages 6-10



## E-LINE Stainless Steel

The Ultimate Value in Stainless Steel Casters, Wheels & Accessories

Pages 11-14



## Shopping Cart Casters & Wheels

Pages 15-17



## Accessories

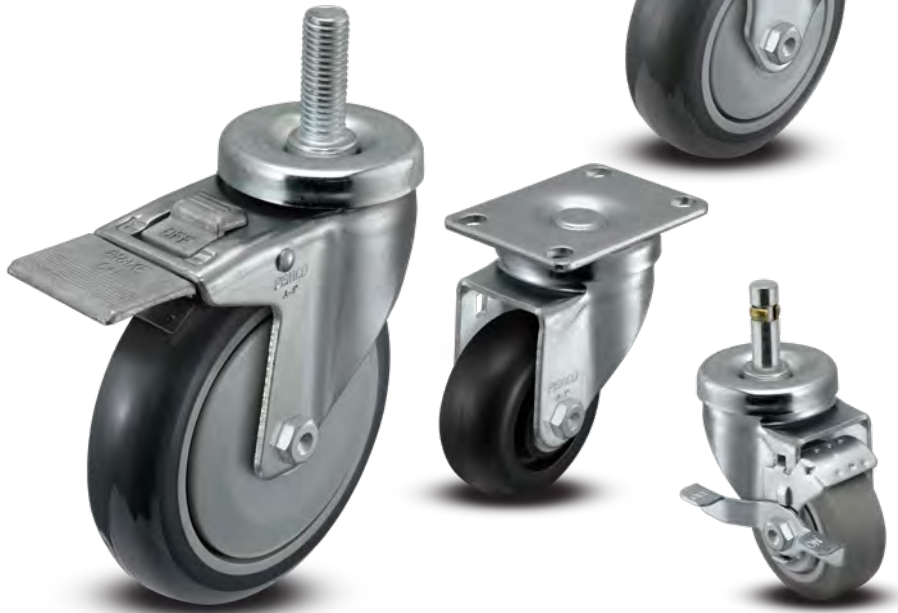
Pages 18-21





Consult factory for RoHS and NSF requirements on a part specific basis.

A-line is a competitive, core lineup of 1-1/4" wide casters designed and mass-produced for a wide range of applications. ANSI-ICWM:2018 tested to provide working load capacities up to 350 lbs. per caster, A-line is an economical and in-stock 1-1/4" wide offering you can depend on. A-line is available in a variety of size, wheel, fastening, and brake options and features our one-year standard warranty.



## FEATURES

- The industry's most popular 1-1/4" wide caster sizes, wheels, fastenings, brakes, and accessories
- Thick, high-strength steel construction
- Dual ball bearing raceway design
- Raceway dust cap standard on all swivel models for increased caster life and performance
- Dynamic load capacities up to 350 lbs. per caster
- Durable zinc finish
- 3/8" diameter nut and bolt axle
- Full thread guards and precision ball bearings on TPR and TPU wheels provide smooth and quiet performance and help prevent debris from entangling wheel
- Many Polyolefin (POD) wheel models are NSF listed (consult factory)

## APPLICATIONS

- Carts
- Material Handling Equipment
- Store Fixtures
- Institutional Equipment
- Office Equipment
- Storage Equipment/Cabinets
- Hospitality Carts
- Food Service

## Brake Options



### Side Brake

Utilizes a lower sitting brake lever (on/off) that engages and disengages a brake arm that securely locks on the face of the wheel when engaged. See below total lock to also lock the swivel section of the caster.



### Total Lock

Integrated brake pedal simultaneously locks both wheel and swivel section of caster when engaged. Simply push the "OFF" portion of the brake pedal to resume full mobility of wheel and swivel.

## Wheel & Bearing Options

TPR



### Thermo-Rubber (TPR)

Thermo-Rubber (TPR) wheels provide excellent floor protection, are resistant to most chemical/oils, and help reduce vibration by absorbing shock. Standard precision ball bearings provide easy and quiet rolling. Full thread guards prevent debris from entangling the axles.

**Durometer:** 75A (±5)  
**Temp Range:** -40°F to +180°F

TPU



### Thermo-Urethane (TPU)

Thermo-Urethane (TPU) wheels are the most ergonomic and easiest to roll, provide excellent floor protection, and are highly resistant to chemicals/oils. Standard precision ball bearings provide easy and quiet rolling. Full thread guards prevent debris from entangling the axles.

**Durometer:** 90A (±5)  
**Temp Range:** -40°F to +180°F

POD



### Polyolefin (POD)

Polyolefin (POD) wheels are the most economical wheel. Wheels come with DuPont engineered Delrin bearings which are extremely durable under a wide range of temperature and humidity conditions. They are also corrosion resistant and lightweight.

**Durometer:** 70D (±5)  
**Temp Range:** -40°F to +180°F

## Wheel Bearings



Precision Ball

Centered Precision Ball Bearing standard on Thermo-Rubber (TPR) and Thermo-Urethane (TPU) wheels



Delrin®

Comes standard on Polyolefin (POD) wheels

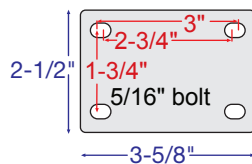


## Plate Caster Models and Specifications

To Order, Insert Applicable Plate Code (shown below) Into Part#. Example: AS30**P1**TPR

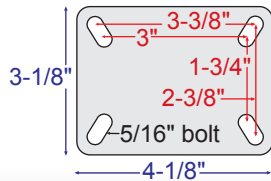
Wheel Diameter	Tread Width	Wheel Tread Type	Load Capacity (lbs)	Mounting Height	Swivel Radius	Standard Bearing	Thread Guard Type	Swivel Caster Part #	Rigid Caster Part #	Side Brake (SB) Part #	Total Lock Brake (TL) Part #
3"	1 1/4"	Thermo-Rubber (TPR)	210	4 1/4"	2 15/16" See below for brake models	Precision Ball	Full	AS30__TPR	AR30__TPR	AS30__TPRSB	AS30 <b>P1</b> TPRTL
		Thermo-Urethane (TPU)	250			Precision Ball	Full	AS30__TPU	AR30__TPU	AS30__TPUSB	AS30 <b>P1</b> TPUTL
		Polyolefin (POD)	270			Delrin	None	AS30__POD	AR30__POD	AS30__PODSB	AS30 <b>P1</b> PODTL
3 1/2"	1 1/4"	Thermo-Rubber (TPR)	250	4 3/4"	3 1/8" See below for brake models	Precision Ball	Full	AS35__TPR	AR35__TPR	AS35__TPRSB	AS35 <b>P1</b> TPRTL
		Thermo-Urethane (TPU)	275			Precision Ball	Full	AS35__TPU	AR35__TPU	AS35__TPUSB	AS35 <b>P1</b> TPUTL
		Polyolefin (POD)	275			Delrin	None	AS35__POD	AR35__POD	AS35__PODSB	AS35 <b>P1</b> PODTL
4"	1 1/4"	Thermo-Rubber (TPR)	275	5 1/4"	3 3/8" See below for brake models	Precision Ball	Full	AS40__TPR	AR40__TPR	AS40__TPRSB	AS40 <b>P1</b> TPRTL
		Thermo-Urethane (TPU)	300			Precision Ball	Full	AS40__TPU	AR40__TPU	AS40__TPUSB	AS40 <b>P1</b> TPUTL
		Polyolefin (POD)	275			Delrin	None	AS40__POD	AR40__POD	AS40__PODSB	AS40 <b>P1</b> PODTL
5"	1 1/4"	Thermo-Rubber (TPR)	325	6 1/4"	3 7/8" See below for brake models	Precision Ball	Full	AS50__TPR	AR50__TPR	AS50__TPRSB	AS50 <b>P1</b> TPRTL
		Thermo-Urethane (TPU)	350			Precision Ball	Full	AS50__TPU	AR50__TPU	AS50__TPUSB	AS50 <b>P1</b> TPUTL
		Polyolefin (POD)	325			Delrin	None	AS50__POD	AR50__POD	AS50__PODSB	AS50 <b>P1</b> PODTL

### Top Plates (P1 & P2)



**P1** (Insert P1 Plate Code Into Part #)

Standard Plate



**P2** (Insert P2 Plate Code Into Part #)

Optional Plate

Not standard with Total Lock (TL) brake option; consult factory for minimums.



### Wheel Guide



#### Thermo-Rubber (TPR)

Thermo-Rubber (TPR) wheels provide excellent floor protection, are resistant to most chemical/oils, and help reduce vibration by absorbing shock. Standard precision ball bearings provide easy and quiet rolling. Full thread guards prevent debris from entangling the axles.

**Durometer:** 75A (±5) **Temp Range:** -40°F to +180°F

#### Thermo-Urethane (TPU)

Thermo-Urethane (TPU) wheels are the most ergonomic and easiest to roll, provide excellent floor protection, and are highly resistant to chemicals/oils. Standard precision ball bearings provide easy and quiet rolling. Full thread guards prevent debris from entangling the axles.

**Durometer:** 90A (±5) **Temp Range:** -40°F to +180°F

#### Polyolefin (POD)

Polyolefin (POD) wheels are the most economical wheel. Wheels come with DuPont engineered Delrin bearings which are extremely durable under a wide range of temperature and humidity conditions. They are also corrosion resistant and lightweight.

**Durometer:** 70D (±5) **Temp Range:** -40°F to +180°F

### Brake Swivel Radius

Wheel Diameter	Brake Type	Swivel Radius
3"	Side Brake	3 3/4"
	Total Lock Brake	4 3/8"
3 1/2"	Side Brake	3 3/4"
	Total Lock Brake	4 7/16"
4"	Side Brake	3 3/4"
	Total Lock Brake	4 7/16"
5"	Side Brake	3 7/8"
	Total Lock Brake	4 7/16"



Side Brake

Total Lock Brake

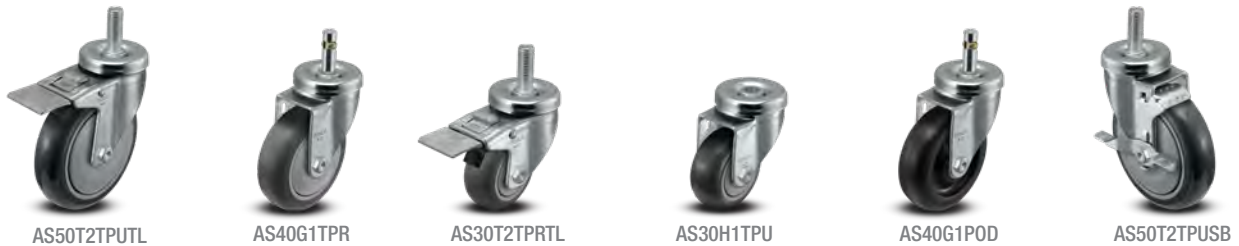


## Stem and Hollow Kingpin Caster Models and Specifications

Wheel Diameter	Tread Width	Wheel Tread Type	Load Capacity (lbs)	Mounting Height	Swivel Radius	Standard Bearing	Thread Guard Type	Swivel Caster Part #	Side Brake (SB) Part #	Total Lock Brake (TL) Part #
3"	1 1/4"	Thermo-Rubber (TPR)	210	4 1/8"	2 15/16" See below for brake models	Precision Ball	Full	AS30__TPR	AS30__TPRSB	AS30__TPRTL
		Thermo-Urethane (TPU)	250			Precision Ball	Full	AS30__TPU	AS30__TPUSB	AS30__TPUTL
		Polyolefin (POD)	270			Delrin	None	AS30__POD	AS30__PODSB	AS30__PODTL
3 1/2"	1 1/4"	Thermo-Rubber (TPR)	250	4 5/8"	3 1/8" See below for brake models	Precision Ball	Full	AS35__TPR	AS35__TPRSB	AS35__TPRTL
		Thermo-Urethane (TPU)	275			Precision Ball	Full	AS35__TPU	AS35__TPUSB	AS35__TPUTL
		Polyolefin (POD)	275			Delrin	None	AS35__POD	AS35__PODSB	AS35__PODTL
4"	1 1/4"	Thermo-Rubber (TPR)	275	5 1/8"	3 3/8" See below for brake models	Precision Ball	Full	AS40__TPR	AS40__TPRSB	AS40__TPRTL
		Thermo-Urethane (TPU)	300			Precision Ball	Full	AS40__TPU	AS40__TPUSB	AS40__TPUTL
		Polyolefin (POD)	275			Delrin	None	AS40__POD	AS40__PODSB	AS40__PODTL
5"	1 1/4"	Thermo-Rubber (TPR)	325	6 1/8"	3 7/8" See below for brake models	Precision Ball	Full	AS50__TPR	AS50__TPRSB	AS50__TPRTL
		Thermo-Urethane (TPU)	350			Precision Ball	Full	AS50__TPU	AS50__TPUSB	AS50__TPUTL
		Polyolefin (POD)	325			Delrin	None	AS50__POD	AS50__PODSB	AS50__PODTL



### Part Examples



### Wheel Guide

TPR



#### Thermo-Rubber (TPR)

Thermo-Rubber (TPR) wheels provide excellent floor protection, are resistant to most chemical/oils, and help reduce vibration by absorbing shock. Standard precision ball bearings provide easy and quiet rolling. Full thread guards prevent debris from entangling the axles.

**Durometer:** 75A (±5) **Temp Range:** -40°F to +180°F

TPU



#### Thermo-Urethane (TPU)

Thermo-Urethane (TPU) wheels are the most ergonomic and easiest to roll, provide excellent floor protection, and are highly resistant to chemicals/oils. Standard precision ball bearings provide easy and quiet rolling. Full thread guards prevent debris from entangling the axles.

**Durometer:** 90A (±5) **Temp Range:** -40°F to +180°F

POD



#### Polyolefin (POD)

Polyolefin (POD) wheels are the most economical wheel. Wheels come with DuPont engineered Delrin bearings which are extremely durable under a wide range of temperature and humidity conditions. They are also corrosion resistant and lightweight.

**Durometer:** 70D (±5) **Temp Range:** -40°F to +180°F

### Brake Swivel Radius

Wheel Diameter	Brake Type	Swivel Radius
3"	Side Brake	3 3/4"
	Total Lock Brake	4 3/8"
3 1/2"	Side Brake	3 3/4"
	Total Lock Brake	4 7/16"
4"	Side Brake	3 3/4"
	Total Lock Brake	4 7/16"
5"	Side Brake	3 7/8"
	Total Lock Brake	4 7/16"



Side Brake



Total Lock Brake

## A-Line Components

### Swivel and Rigid Plate and Stem Rigs



AS40P1 shown

Wheel Dia.	Tread Width	*Load Capacity (lbs)	Mount Height w/ Wheel	Swivel Radius w/ Wheel	Swivel Rig Part #	Rigid Rig Part #
3"	1 1/4"	270	4-1/4"	2-15/16"	AS30P1	AR30P1
3 1/2"		275	4-3/4"	3-1/8"	AS35P1	AR35P1
4"		300	5-1/4"	3-3/8"	AS40P1	AR40P1
5"		350	6-1/4"	3-7/8"	AS50P1	AR50P1

#### Swivel and Rigid Plate (P1 2-1/2 x 3-5/8) Rigs



AR40P1 shown

Wheel Dia.	Tread Width	*Load Capacity (lbs)	Mount Height w/ Wheel	Swivel Radius w/ Wheel	Swivel Rig Part #	Rigid Rig Part #
3"	1 1/4"	270	4-1/4"	2-15/16"	AS30P2	AR30P2
3 1/2"		275	4-3/4"	3-1/8"	AS35P2	AR35P2
4"		300	5-1/4"	3-3/8"	AS40P2	AR40P2
5"		350	6-1/4"	3-7/8"	AS50P2	AR50P2

#### Swivel and Rigid Plate (P2 3-1/8 x 4-1/8) Rigs

#### Threaded Stem (T1 1/2-13 x 1 Thread) Rigs



AS40T2 shown

Wheel Dia.	Tread Width	*Load Capacity (lbs)	Mount Height w/ Wheel	Swivel Radius w/ Wheel	Swivel Rig Part #
3"	1 1/4"	270	4-1/8"	2-15/16"	AS30T1
3 1/2"		275	4-5/8"	3-1/8"	AS35T1
4"		300	5-1/8"	3-3/8"	AS40T1
5"		350	6-1/8"	3-7/8"	AS50T1

#### Threaded Stem (T2 1/2-13 x 1-1/2 Thread) Rigs

Wheel Dia.	Tread Width	*Load Capacity (lbs)	Mount Height w/ Wheel	Swivel Radius w/ Wheel	Swivel Rig Part #
3"	1 1/4"	270	4-1/8"	2-15/16"	AS30T2
3 1/2"		275	4-5/8"	3-1/8"	AS35T2
4"		300	5-1/8"	3-3/8"	AS40T2
5"		350	6-1/8"	3-7/8"	AS50T2

#### Grip Band Stem (G1 7/16 x 1-3/8 Grip Band) Rigs



AS40G1 shown

Wheel Dia.	Tread Width	*Load Capacity (lbs)	Mount Height w/ Wheel	Swivel Radius w/ Wheel	Swivel Rig Part #
3"	1 1/4"	270	4-1/8"	2-15/16"	AS30G1
3 1/2"		275	4-5/8"	3-1/8"	AS35G1
4"		300	5-1/8"	3-3/8"	AS40G1
5"		350	6-1/8"	3-7/8"	AS50G1

#### Hollow Kingpin (H1 1/2 Hollow Kingpin) Rigs



AT40H1 shown

Wheel Dia.	Tread Width	*Load Capacity (lbs)	Mount Height w/ Wheel	Swivel Radius w/ Wheel	Swivel Rig Part #
3"	1 1/4"	270	4-1/8"	2-15/16"	AS30H1
3 1/2"		275	4-5/8"	3-1/8"	AS35H1
4"		300	5-1/8"	3-3/8"	AS40H1
5"		350	6-1/8"	3-7/8"	AS50H1

### Total Lock Rigs



AT40P1 shown

Wheel Dia.	Tread Width	*Load Capacity (lbs)	Mount Height w/ Wheel	Swivel Radius w/ Wheel	Total Lock Rig Part #
3"	1 1/4"	270	4-1/4"	4-3/8"	AT30P1
3 1/2"		275	4-3/4"	4-7/16"	AT35P1
4"		300	5-1/4"	4-7/16"	AT40P1
5"		350	6-1/4"	4-7/16"	AT50P1

#### Swivel Plate (P1 2-1/2 x 3-5/8) Rigs

#### Threaded Stem (T1 1/2-13 x 1 Thread) Rigs



AT40T2 shown

Wheel Dia.	Tread Width	*Load Capacity (lbs)	Mount Height w/ Wheel	Swivel Radius w/ Wheel	Total Lock Rig Part #
3"	1 1/4"	270	4-1/8"	4-3/8"	AT30T1
3 1/2"		275	4-5/8"	4-7/16"	AT35T1
4"		300	5-1/8"	4-7/16"	AT40T1
5"		350	6-1/8"	4-7/16"	AT50T1

#### Threaded Stem (T2 1/2-13 x 1-1/2 Thread) Rigs



AT40G1 shown

Wheel Dia.	Tread Width	*Load Capacity (lbs)	Mount Height w/ Wheel	Swivel Radius w/ Wheel	Total Lock Rig Part #
3"	1 1/4"	270	4-1/8"	4-3/8"	AT30T2
3 1/2"		275	4-5/8"	4-7/16"	AT35T2
4"		300	5-1/8"	4-7/16"	AT40T2
5"		350	6-1/8"	4-7/16"	AT50T2

#### Grip Band Stem (G1 7/16 x 1-3/8 Grip Band) Rigs



AT40H1 shown

Wheel Dia.	Tread Width	*Load Capacity (lbs)	Mount Height w/ Wheel	Swivel Radius w/ Wheel	Total Lock Rig Part #
3"	1 1/4"	270	4-1/8"	4-3/8"	AT30G1
3 1/2"		275	4-5/8"	4-7/16"	AT35G1
4"		300	5-1/8"	4-7/16"	AT40G1
5"		350	6-1/8"	4-7/16"	AT50G1

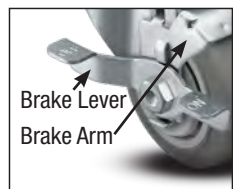
#### Hollow Kingpin (H1 1/2 Hollow Kingpin) Rigs

Wheel Dia.	Tread Width	*Load Capacity (lbs)	Mount Height w/ Wheel	Swivel Radius w/ Wheel	Total Lock Rig Part #
3"	1 1/4"	270	4-1/8"	4-3/8"	AT30H1
3 1/2"		275	4-5/8"	4-7/16"	AT35H1
4"		300	5-1/8"	4-7/16"	AT40H1
5"		350	6-1/8"	4-7/16"	AT50H1

\* Some wheels have lower load capacities than the rig; please reference page 3 for the assembled load capacity for each wheel type.

## Brake Parts

### Side Brake (SB)



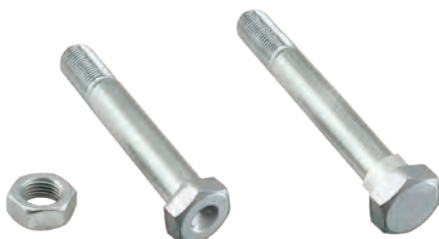
#### Brake Arm

BARM30AX125	3" models
BARM35AX125	3-1/2" models
BARM40AX125	4" models
BARM50AX125	5" models

#### Brake Lever

BLVRAX125	Fits all sizes
-----------	----------------

## Axles and Nuts



Nut for all Axles  
NUTAX125

Standard Axle for Swivel, Rigid, Total Lock  
AXLEAX125

Axle for Side Brake  
AXLESBAX125

## Wheels

Wheel Dia.	Tread Width	*Load Capacity (lbs)	Tread Type	Bearing Type	Thread Guards	WheelPart #
3"	1 1/4"	210	Thermo-Rubber (TPR)	Precision Ball	Full	WH30X125TPR
		250	Thermo-Urethane (TPU)	Precision Ball	Full	WH30X125TPU
		270	Polyolefin (POD)	Delrin	None	WH30X125POD
3 1/2"	1 1/4"	250	Thermo-Rubber (TPR)	Precision Ball	Full	WH35X125TPR
		275	Thermo-Urethane (TPU)	Precision Ball	Full	WH35X125TPU
		275	Polyolefin (POD)	Delrin	None	WH35X125POD
4"	1 1/4"	275	Thermo-Rubber (TPR)	Precision Ball	Full	WH40X125TPR
		300	Thermo-Urethane (TPU)	Precision Ball	Full	WH40X125TPU
		275	Polyolefin (POD)	Delrin	None	WH40X125POD
5"	1 1/4"	325	Thermo-Rubber (TPR)	Precision Ball	Full	WH50X125TPR
		350	Thermo-Urethane (TPU)	Precision Ball	Full	WH50X125TPU
		325	Polyolefin (POD)	Delrin	None	WH50X125POD



Thermo-Rubber (TPR)



Thermo-Urethane (TPU)



Polyolefin (POD)

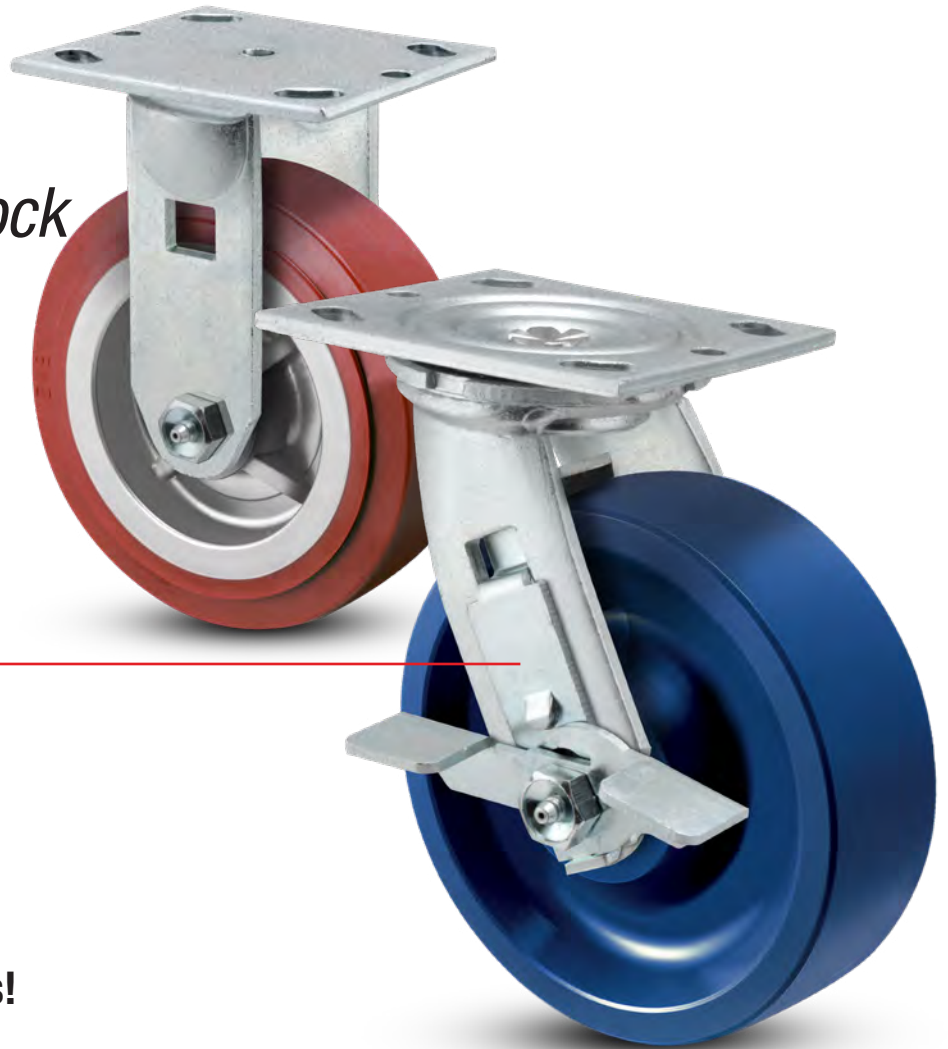


Consult factory for RoHS and NSF requirements on a part specific basis.

# PEMCO®

## **E-LINE** *Economical & In-Stock*

*2" Wide Casters, Wheels  
and Accessories*



**Internal Brake Arm Stays  
Protected From Forklifts  
and Other Equipment!**



KWL

MAX

GFP

**Three NEW Wheel Offerings!**



**The E-line is an economical lineup of casters and wheels** designed and mass-produced for a range of medium-duty applications with load requirements ranging from 300 to 1,250 lbs. per caster. From shop carts and containers, to platform and lumber carts, the E-Line is your most competitive and in-stock 2" wide solution.

- The industry's most popular 2" wide caster sizes, wheel options, brake configurations, and accessories.
- Capacities up to 1,250 lbs. per caster.
- Double ball raceways for smooth swiveling action.
- 1/4" thick steel leg construction on swivel and rigid casters. 3/16" construction on total lock casters.
- 5/8" diameter permanent rivet kingpin.
- RoHS compliant industrial zinc finish for corrosion resistance.
- 1/2" hollow axle with grease zerck and lock nut.
- Total lock permanently integrated into swivel fork on total lock models.

## Swivel Brake Options



**Total Lock**  
Integrated into swivel fork ... locks and unlocks both wheel and swivel with a toe tap. Models shown in chart.



Wheel Face Brake (WFB)



Tread Lock Brake (TBK)



Short Pedal - 5" Length Cam Brake (CAMS)



Long Pedal - 7" Length Cam Brake (CAML)

Roller Bearing required for CAM Brakes. Not available on Solid Polyurethane K or PolyKat™

## Rigid Brake Options



Wheel Face Brake (not available on 4" and 5" rigid models) (WFB)



Tread Lock Brake (TBK)



Short Pedal - 5" Length Cam Brake (CAMS)



Long Pedal - 7" Length Cam Brake. Not available on 4" and 5" rigid models. (CAML)

\*Roller Bearing required for CAM Brakes.

## Wheel Options

### POLYURETHANE TREAD WHEELS



PolyKat™ Thermo-Urethane



Thermo-Urethane



Solid Polyurethane K



Mold-on Poly

### RUBBER/THERMORUBER CUSHION WHEELS



Mold-on Rubber



Thermo-Rubber Flat



Thermo-Rubber Donut

### HARD TREAD WHEELS



Glass Filled Polypropylene



Maxim® Glass Filled Nylon



Phenolic



Polypropylene HD



Cast Iron

See wheel features and descriptions on page 4.

## Bearing Options



Roller Standard (R)



Pedestal Precision Ball (B)



Delrin® (D)



Precision Ball Standard on PolyKat (PB) and KWL (B) wheels.

To specify the optional Pedestal Precision Ball (B) or Delrin (D) bearing in a caster, please add B or D to the end of the Part # (see following pages). To order bearing alone, please see Page 5.

## Retainer Washer Option

### Standard



Plastic Retainer Washer

### Optional



Steel Retainer Washer (SW)

Plastic retainer washers come standard on wheels with roller bearings; to order optional steel retainer washers add SW to the end of the part#. Example ES6X2CIRSW

## Sealed Raceway Option

Rubber raceway seals keeps dirt out and lube in for longer caster life. Add RS after ES for free swivel models (example: ESRS6X2TPR). Seals are not recommended when swivel locks are used.



Wheel Dia.	Tread Width	Wheel Type	<sup>1</sup> Load Capacity (lbs)	Mount Height	<sup>2</sup> Swivel Radius	Standard Bearing	Swivel Caster Part #	Rigid Caster Part #	Total Lock <sup>1</sup> Brake	<sup>3</sup> Caster Bearing Options	<sup>4</sup> Other Brake Options
4"	2"	TPR Thermo-Rubber (Flat)	300	5-5/8"	3-3/8"	Roller	ES4X2TPR	ER4X2TPR	ET4X2TPR	(+) B, D	(+), WFB, TBK, CAMS, CAML
		TPD Thermo-Rubber (Donut)	300	5-5/8"		Roller	ES4X2TPD	ER4X2TPD	ET4X2TPD	(+) B, D	
		MOR Mold-on Rubber	400	5-5/8"		Roller	ES4X2MOR	ER4X2MOR	ET4X2MOR	(+) B	
		TUM Thermo-Urethane	500	5-5/8"		Pedestal Ball	ES4X2PKTP8	ER4X2PKTP8	ET4X2PKTP8	None	
		POD Polypropylene HD	500	5-5/8"		Roller	ES4X2POD	ER4X2POD	ET4X2POD	(+) B, D	
		PKT PolyKat™ Thermo-Urethane	600	5-5/8"		Roller	ES4X2TUM	ER4X2TUM	ET4X2TUM	(+) B, D	
		KWL Solid Polyurethane K	700	5-5/8"		Pedestal Ball	ES4X2KWL	ER4X2KWL	ET4X2KWL	(+) D	
		MOP Mold-on Poly	800	5-5/8"		Roller	ES4X2MOP	ER4X2MOP	ET4X2MOP	(+) B	
		GFP Glass-Filled Polypropylene	800	5-5/8"		Roller	ES4X2GFP	ER4X2GFP	ET4X2GFP	(+) B, D	
		MAX Maxim® Glass-Filled Nylon	800	5-5/8"		Roller	ES4X2MAX	ER4X2MAX	ET4X2MAX	(+) B, D	
		PHN Phenolic	800	5-5/8"		Roller	ES4X2PHN	ER4X2PHN	ET4X2PHN	(+) B, D	
		CIR Cast Iron	800	5-5/8"		Roller	ES4X2CIR	ER4X2CIR	ET4X2CIR	(+) B	
5"	2"	TPR Thermo-Rubber (Flat)	350	6-1/2"	4"	Roller	ES5X2TPR	ER5X2TPR	ET5X2TPR	(+) B, D	(+), WFB, TBK, CAMS, CAML
		TPD Thermo-Rubber (Donut)	350	6-1/2"		Roller	ES5X2TPD	ER5X2TPD	ET5X2TPD	(+) B, D	
		MOR Mold-on Rubber	400	6-1/2"		Roller	ES5X2MOR	ER5X2MOR	ET5X2MOR	(+) B	
		TUM Thermo-Urethane	600	6-1/2"		Roller	ES5X2TUM	ER5X2TUM	ET5X2TUM	(+) B, D	
		POD Polypropylene HD	600	6-1/2"		Roller	ES5X2POD	ER5X2POD	ET5X2POD	(+) B, D	
		PKT PolyKat™ Thermo-Urethane	800	6-1/2"		Pedestal Ball	ES5X2PKTP8	ER5X2PKTP8	ET5X2PKTP8	None	
		KWL Solid Polyurethane K	1000	6-1/2"		Pedestal Ball	ES5X2KWL	ER5X2KWL	ET5X2KWL	(+) D	
		MOP Mold-on Poly	1100	6-1/2"		Roller	ES5X2MOP	ER5X2MOP	ET5X2MOP	(+) B	
		GFP Glass-Filled Polypropylene	1000	6-1/2"		Roller	ES5X2GFP	ER5X2GFP	ET5X2GFP	(+) B, D	
		MAX Maxim® Glass-Filled Nylon	1000	6-1/2"		Roller	ES5X2MAX	ER5X2MAX	ET5X2MAX	(+) B, D	
		PHN Phenolic	1000	6-1/2"		Roller	ES5X2PHN	ER5X2PHN	ET5X2PHN	(+) B, D	
		GFP Glass-Filled Polypropylene	1000	6-1/2"		Roller	ES5X2GFP	ER5X2GFP	ET5X2GFP	(+) B, D	
MAX Maxim® Glass-Filled Nylon	1000	6-1/2"	Roller	ES5X2MAX	ER5X2MAX	ET5X2MAX	(+) B, D				
PHN Phenolic	1000	6-1/2"	Roller	ES5X2PHN	ER5X2PHN	ET5X2PHN	(+) B, D				
CIR Cast Iron	1000	6-1/2"	Roller	ES5X2CIR	ER5X2CIR	ET5X2CIR	(+) B				
6"	2"	TPR Thermo-Rubber (Flat)	500	7-1/2"	4-3/4"	Roller	ES6X2TPR	ER6X2TPR	ET6X2TPR	(+) B, D	(+), WFB, TBK, CAMS, CAML
		TPD Thermo-Rubber (Donut)	500	7-1/2"		Roller	ES6X2TPD	ER6X2TPD	ET6X2TPD	(+) B, D	
		MOR Mold-on Rubber	550	7-1/2"		Roller	ES6X2MOR	ER6X2MOR	ET6X2MO	(+) B	
		POD Polypropylene HD	600	7-1/2"		Roller	ES6X2POD	ER6X2POD	ET6X2POD	(+) B, D	
		TUM Thermo-Urethane	720	7-1/2"		Roller	ES6X2TUM	ER6X2TUM	ET6X2TUM	(+) B, D	
		PKT PolyKat™ Thermo-Urethane	1200	7-1/2"		Pedestal Ball	ES6X2PKTP8	ER6X2PKTP8	ET6X2PKTP8	None	
		KWL Solid Polyurethane K	1200	7-1/2"		Pedestal Ball	ES6X2KWL	ER6X2KWL	ET6X2KWL	(+) D	
		MOP Mold-on Poly	1200	7-1/2"		Roller	ES6X2MOP	ER6X2MOP	ET6X2MOP	(+) B	
		GFP Glass-Filled Polypropylene	1200	7-1/2"		Roller	ES6X2GFP	ER6X2GFP	ET6X2GFP	(+) B, D	
		MAX Maxim® Glass-Filled Nylon	1200	7-1/2"		Roller	ES6X2MAX	ER6X2MAX	ET6X2MAX	(+) B, D	
		PHN Phenolic	1200	7-1/2"		Roller	ES6X2PHN	ER6X2PHN	ET6X2PHN	(+) B, D	
		CIR Cast Iron	1200	7-1/2"		Roller	ES6X2CIR	ER6X2CIR	ET6X2CIR	(+) B	
8"	2"	MOR Mold-on Rubber	600	9-1/2"	6-1/4"	Roller	ES8X2MOR	ER8X2MOR	ET8X2MOR	(+) B	(+), WFB, TBK, CAMS, CAML
		TPR Thermo-Rubber (Flat)	600	9-1/2"		Roller	ES8X2TPR	ER8X2TPR	ET8X2TPR	(+) B, D	
		TPD Thermo-Rubber (Donut)	600	9-1/2"		Roller	ES8X2TPD	ER8X2TPD	ET8X2TPD	(+) B, D	
		TUM Thermo-Urethane	800	9-1/2"		Roller	ES8X2TUM	ER8X2TUM	ET8X2TUM	(+) B, D	
		POD Polypropylene HD	900	9-1/2"		Roller	ES8X2POD	ER8X2POD	ET8X2POD	(+) B, D	
		PKT PolyKat™ Thermo-Urethane	1200	9-1/2"		Pedestal Ball	ES8X2PKTP8	ER8X2PKTP8	ET8X2PKTP8	None	
		KWL Solid Polyurethane K	1250	9-1/2"		Pedestal Ball	ES8X2KWL	ER8X2KWL	ET8X2KWL	(+) D	
		MOP Mold-on Poly	1250	9-1/2"		Roller	ES8X2MOP	ER8X2MOP	ET8X2MOP	(+) B	
		GFP Glass-Filled Polypropylene	1250	9-1/2"		Roller	ES8X2GFP	ER8X2GFP	ET8X2GFP	(+) B, D	
		MAX Maxim® Glass-Filled Nylon	1250	9-1/2"		Roller	ES8X2MAX	ER8X2MAX	ET8X2MAX	(+) B, D	
		PHN Phenolic	1250	9-1/2"		Roller	ES8X2PHN	ER8X2PHN	ET8X2PHN	(+) B, D	
		CIR Cast Iron	1250	9-1/2"		Roller	ES8X2CIR	ER8X2CIR	ET8X2CIR	(+) B	

<sup>1</sup> Maximum weight capacity of total lock brake casters is 900 lbs. each.

<sup>2</sup> Swivel radius shown in above table is for standard swivel plate models; for brake swivel radius see table to right.

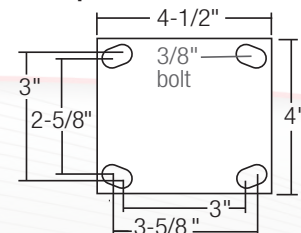
<sup>3</sup> Available optional bearings are shown in this column. To order add appropriate code. Delrin example: ES4X2MAXD. For KWL change B to D. ESX2KWL D

<sup>4</sup> To order with an optional brake, add brake code to end of swivel or rigid caster part #. Tread lock brake example with roller bearing: ES6X2TPR**TBK**. Tread lock brake example with

8 Precision ball bearing: ES6X2TPR**B**TBK.

Wheel Diameter	Brake Swivel Radius			
	Total Lock	Wheel Face Brake (WFB)	Tread Lock Brake (TBK)	Cam Brake (CAM)
4"	5-7/16"	6-1/4"	4"	5"
5"	5-13/16"	6-7/8"	4-1/4"	5-1/8"
6"	6"	7-5/8"	4-3/4"	6-1/4"
8"	6-3/5"	8-1/2"	6-1/8"	6-3/4"

### Top Plate Dimensions





## Wheel Features

### PolyKat™ Thermo-Urethane

- Premium Polyurethane on Glass reinforced Polypropylene core
- Maintenance free, sealed precision ball bearings
- Excellent roll-ability and floor protection.
- High load capacity and impact strength.
- Good in wet applications, resistant to most chemicals



PKT

Durometer: 55 Shore D (±5)

### Thermo-Urethane

- Polyurethane tread mechanically locked to polypropylene core
- Attractive, all-purpose wheel
- Good in wet applications, resistant to most chemicals



TUM

Durometer: 95 Shore A (±5)

### Solid Polyurethane K

- Molded from a high strength urethane compound
- Solid wheel eliminates any possibility of tread separation
- Good in wet applications, resistant to most chemicals
- Wheel works with Torrington style roller bearing



KWL

Durometer: 55 Shore D (±5)

### Mold-on Poly

- Polyurethane bonded to cast iron core
- High load capacity
- Good roll-ability and floor protection



MOP

Durometer: 95 Shore A (±5)

### Mold-on Rubber

- Rubber bonded to cast iron core
- Quiet, shock absorbing ride



MOR

Durometer: 85 Shore A (±5)

### Thermo-Rubber Flat and Donut

- Non-marking tread
- Good floor protection
- Quiet, shock absorbing ride
- Good in wet environments, resistant to most chemicals



TPR

TPD

Durometer: 90 Shore A (±5)

### Glass Filled Polypropylene

- Stronger than standard Polypropylene
- Higher capacity compared to standard Polypropylene



GFP

Durometer: 65 Shore D (±5)

### Maxim® Glass Filled Nylon

- Excellent load capacity
- Superior in wet environments, resistant to most chemicals



MAX

Durometer: 85 Shore D (±5)

### Phenolic

- High load capacity.
- Hard tread, rolls easily
- Excellent impact strength
- Abrasion resistant



PHN

Durometer: 90 Shore D (±5)

## Wheels Only Options

Wheel Dia.	Tread Width	Wheel Type	Standard Bearing	Load Capacity (lbs)	Bearing Bore	Wheel Part # Standard Bearing	Bearing Options	Wheel Part # No Bearing
4"	2"	TPR Thermo-Rubber (Flat)	Roller	300	1/2"	WH4X2TPRR	(+) B, D	WH4X2TPR19
		TPD Thermo-Rubber (Donut)	Roller	300	1/2"	WH4X2TPDR	(+) B, D	WH4X2TPD19
		MOR Mold-on Rubber	Roller	400	1/2"	WH4X2MORR	(+) B	WH4X2MOR19
		TUM Thermo-Urethane	Roller	500	1/2"	WH4X2TUMR	(+) B, D	WH4X2TUM19
		POD Polypropylene HD	Roller	500	1/2"	WH4X2PODR	(+) B, D	WH4X2POD19
		PKT PolyKat™ Thermo-Urethane	Pedestal Ball	600	1/2"	WH4X2PKTP8	N/A	—
		KWL Solid Polyurethane K	Pedestal Ball	700	1/2"	WH4X2KWL8	(+) D	WH4X2KWL19
		MOP Mold-on Poly	Roller	800	1/2"	WH4X2MOPR	(+) B	WH4X2MOP19
		GFP Glass-Filled Polypropylene	Roller	800	1/2"	WH4X2GFPR	(+) B, D	WH4X2GFP19
		MAX Maxim® Glass-Filled Nylon	Roller	800	1/2"	WH4X2MAXR	(+) B, D	WH4X2MAX19
		PHN Phenolic	Roller	800	1/2"	WH4X2PHNR	(+) B, D	WH4X2PHN19
		CIR Cast Iron	Roller	800	1/2"	WH4X2CIRR	(+) B	WH4X2CIR19
5"	2"	TPR Thermo-Rubber (Flat)	Roller	350	1/2"	WH5X2TPRR	(+) B, D	WH5X2TPR19
		TPD Thermo-Rubber (Donut)	Roller	350	1/2"	WH5X2TPDR	(+) B, D	WH5X2TPD19
		MOR Mold-on Rubber	Roller	400	1/2"	WH5X2MORR	(+) B	WH5X2MOR19
		TUM Thermo-Urethane	Roller	600	1/2"	WH5X2TUMR	(+) B, D	WH5X2TUM19
		POD Polypropylene HD	Roller	600	1/2"	WH5X2PODR	(+) B, D	WH5X2POD19
		PKT PolyKat™ Thermo-Urethane	Pedestal Ball	800	1/2"	WH5X2PKTP8	N/A	—
		KWL Solid Polyurethane K	Pedestal Ball	1000	1/2"	WH4X2KWL8	(+) D	WH5X2KWL19
		GFP Glass-Filled Polypropylene	Roller	1000	1/2"	WH5X2GFPR	(+) B, D	WH5X2GFP19
		MAX Maxim® Glass-Filled Nylon	Roller	1000	1/2"	WH5X2MAXR	(+) B, D	WH5X2MAX19
		PHN Phenolic	Roller	1000	1/2"	WH5X2PHNR	(+) B, D	WH5X2PHN19
		CIR Cast Iron	Roller	1000	1/2"	WH5X2CIRR	(+) B	WH5X2CIR19
		MOP Mold-on Poly	Roller	1100	1/2"	WH5X2MOPR	(+) B	WH5X2MOP19
6"	2"	TPR Thermo-Rubber (Flat)	Roller	500	1/2"	WH6X2TPRR	(+) B, D	WH6X2TPR19
		TPD Thermo-Rubber (Donut)	Roller	500	1/2"	WH6X2TPDR	(+) B, D	WH6X2TPD19
		TUM Thermo-Urethane	Roller	720	1/2"	WH6X2TUMR	(+) B, D	WH6X2TUM19
		MOR Mold-on Rubber	Roller	550	1/2"	WH6X2MORR	(+) B	WH6X2MOR19
		POD Polypropylene HD	Roller	600	1/2"	WH6X2PODR	(+) B, D	WH6X2POD19
		PKT PolyKat™ Thermo-Urethane	Pedestal Ball	1200	1/2"	WH6X2PKTP8	N/A	—
		KWL Solid Polyurethane K	Pedestal Ball	1200	1/2"	WH6X2KWL8	(+) D	WH6X2KWL19
		MOP Mold-on Poly	Roller	1200	1/2"	WH6X2MOPR	(+) B	WH6X2MOP19
		GFP Glass-Filled Polypropylene	Roller	1200	1/2"	WH6X2GFPR	(+) B, D	WH6X2GFP19
		MAX Maxim® Glass-Filled Nylon	Roller	1200	1/2"	WH6X2MAXR	(+) B, D	WH6X2MAX19
		PHN Phenolic	Roller	1200	1/2"	WH6X2PHNR	(+) B, D	WH6X2PHN19
		CIR Cast Iron	Roller	1200	1/2"	WH6X2CIRR	(+) B	WH6X2CIR19
8"	2"	TPR Thermo-Rubber (Flat)	Roller	600	1/2"	WH8X2TPRR	(+) B, D	WH8X2TPR19
		TPD Thermo-Rubber (Donut)	Roller	600	1/2"	WH8X2TPDR	(+) B, D	WH8X2TPD19
		MOR Mold-on Rubber	Roller	600	1/2"	WH8X2MORR	(+) B	WH8X2MOR19
		TUM Thermo-Urethane	Roller	800	1/2"	WH8X2TUMR	(+) B, D	WH8X2TUM19
		POD Polypropylene HD	Roller	900	1/2"	WH8X2PODR	(+) B, D	WH8X2POD19
		PKT PolyKat™ Thermo-Urethane	Pedestal Ball	1200	1/2"	WH8X2PKTP8	N/A	—
		MOP Mold-on Poly	Roller	1250	1/2"	WH8X2MOPR	(+) B	WH8X2MOP19
		PHN Phenolic	Roller	1250	1/2"	WH8X2PHNR	(+) B, D	WH8X2PHN19
		CIR Cast Iron	Roller	1250	1/2"	WH8X2CIRR	(+) B	WH8X2CIR19
		GFP Glass-Filled Polypropylene	Roller	1400	1/2"	WH8X2GFPR	(+) B, D	WH8X2GFP19
		MAX Maxim® Glass-Filled Nylon	Roller	1400	1/2"	WH8X2MAXR	(+) B, D	WH8X2MAX19
		KWL Solid Polyurethane K	Pedestal Ball	1500	1/2"	WH8X2KWL8	(+) D	WH8X2KWL19

**Roller bearing** is standard for all above wheels except PolyKat and KWL models which include Pedestal Precision Ball bearings. However, Torrington style roller bearings will fit the KWL wheels. For optional Pedestal Precision Ball bearings, change last letter in part # from **R** to **B**; for Delrin® bearing change the last letter from **R** to **D**. Bearings include spanner bushings when necessary. Plastic retainer washers come standard on wheels with roller bearings; to order optional steel retainer washers add **SW** to the end of the part number.

### Polypropylene HD

- Lightweight economical wheel.
- Good load capacity
- Excellent impact strength
- Superior in wet environments, resistant to most chemicals



POD

Durometer: 70 Shore D (±5)

### Cast Iron

- Solid 1 piece construction
- High load capacity
- Hard tread, rolls easily
- Excellent impact strength
- For high temperature up to 600°F – must use optional steel retainer washers (**SW**)



CIR

### Thread Guard Options



Thread Guards help keep debris out of the wheel bearings. To order: add **TG1** for metal or **TG2** for plastic, to the end of the caster part number. TG2 option only available on TPR & TPD wheels in 5", 6" & 8" diameters – no other wheels currently available with TG2 option.

## E-Line Components

### Swivel and Rigid Rigs



Wheel Dia.	Tread Width	*Load Capacity (lbs)	Mount Height	Swivel Caster Part #	Rigid Caster Part #
4"	2"	1250	5-5/8"	RIG4X2ES	RIG4X2ER
5"	2"	1250	6-1/2"	RIG5X2ES	RIG5X2ER
6"	2"	1250	7-1/2"	RIG6X2ES	RIG6X2ER
8"	2"	1250	9-1/2"	RIG8X2ES	RIG8X2ER



### Total Lock Rigs

Wheel Dia.	Tread Width	*Load Capacity (lbs)	Mount Height	Swivel Radius	Part #
4"	2"	900	5-5/8"	5-7/16"	RIG4X2EST
5"	2"	900	6-1/2"	5-13/16"	RIG5X2EST
6"	2"	900	7-1/2"	6"	RIG6X2EST
8"	2"	900	9-1/2"	6-3/8"	RIG8X2EST

\*Some wheels have lower capacities. See pemccasters.com/eline for specifications.

### Brake Kits

All brake kits include axle, nut and necessary hardware to install on swivel or rigid rigs.

#### Tread Lock Brake (TBK)



TBK4X2E	4" models
TBK5X2E	5" models
TBK6X2E	6" models
TBK8X2E	8" models

#### Wheel Face Brake (WFB)



WFB4X2E	4" models
WFB5X2E	5" models
WFB6X2E	6" models
WFB8X2E	8" models

#### Long Pedal Cam Brake 7" (CAML)

Only works with roller bearing models. Fits 5", 6" & 8" E-Line models.



CAMXX2L	Comes with custom spanner bushing (roller bearing required)
---------	---

#### Short Pedal Cam Brake (5") (CAMS)

Only works with roller bearing models. Fits all caster sizes.



CAMXX2S	Comes with custom spanner bushing (roller bearing required)
---------	---

### Floor Lock Options

#### Single Pedal Floor Locks

Designed to hold your portable equipment in a desired location.



Wheel Dia.	Caster Mtg. Ht.	Retracted Clearance	Approximate Weight (lbs)	Floor Lock #
4"	5-5/8"	3/4"	3-1/4	FL-4E
5"	6-1/2"	3/4"	3-1/2	FL-5E
6"	7-1/2"	3/4"	3-3/4	FL-6E
8"	9-1/2"	3/4"	4	FL-8E

#### Double Pedal Floor Locks

Adaptable to all types of portable equipment, the double pedal floor lock allows for easier floor lock engagement.



Wheel Dia.	Caster Mtg. Ht.	Retracted Clearance	Approximate Weight (lbs)	Floor Lock #
4"	5-5/8"	1"	3-7/8"	FLOCKE40
5"	6-1/2"	1"	4	FLOCKE50
6"	7-1/2"	1-3/8"	4-1/4	FLOCKE60
8"	9-1/2"	1-1/4"	4-3/4	FLOCKE80

### Hardware (All hardware parts sold per piece, not sets)



Axle (Zerk)  
1/2-13x3.62  
**AXLEZRKEX2**

Nut  
1/2-13  
**AXLENUTEX2**

Spanner bushing  
1/2 X 3/4 X 2-7/16  
**SPANNEREX2**



Retaining Washer (Plastic)  
**WHLCAPPLEX2**



Retaining Washer (Steel)  
**WHLCAPSTEX2**



Roller bearing  
3/4 I.D. (Use With Bushing For 1/2 I.D.)  
**BRGROLLEX2**



Pedestal precision bearing  
**BRGPBALLEX2**



Flanged Delrin bearing  
3/4 I.D. (Use With Bushing For 1/2 I.D.)  
**BRGDELRNEX2**

### Raceway Seals

Upper and Lower seals available on swivel caster models (Sold as set). Seals are not recommended when swivel locks are used.



**RCWYSEALEX2**

### 4 Position Swivel Lock

Lock and unlock swivel for easy tracking down hallways



**SWVLOCKX2**

# PEMCO®



Consult factory for RoHS and RoHS requirements on a part specific basis.

## E-LINE™

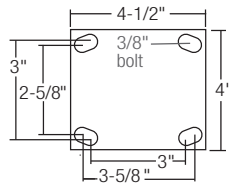
# Stainless Steel

*The Ultimate Value in Stainless Steel  
Casters, Wheels & Accessories*



- Ideal for harsh environments where frequent wash downs, chemicals and other corrosive elements cause zinc plated casters to rust or corrode
- Electropolished 304 stainless steel construction
- 3/16" thick stainless steel top plate and fork legs for durability
- Double stainless steel ball bearing raceways provide smooth swivel
- 5/8" stainless steel kingpin
- Grease fittings standard in swivel raceway and 1/2" diameter stainless steel axle for easy maintenance
- All metal components, such as: bearings, bushings and zerk fittings are stainless steel
- Standard grease on swivel caster rated up to 248°F and will soon feature DOW G-4500 food grade synthetic grease (-58° to 334°F) as standard. For timing and higher-temperature options, please contact factory.

## Top Plate Dimensions



## Brake Options



**Stainless Steel Wheel Face Brake (WFB)**

WFB brakes work on all swivel models and also 6" and 8" rigid models!



**Stainless Steel Tread Lock Brake (TBK)**

TBK brakes work on all swivel models and also all rigid models!



**Stainless Steel Cam Brake (CAM)**

CAM brakes can only be used with Roller Bearing or 1-Piece Delrin bearing options

Field installable brake kits also available. See back page for more info.

## High-Temp



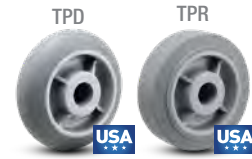
- Designed to withstand the rigors of high temperature, perfect for cooker racks and Retort carts
  - **HRT** is heavy duty glass-filled nylon with a temperature range: -20°F to +480°F continuous
  - **RET** (RETORT) is glass-filled polypropylene with a temperature range: -20°F to +290°F continuous
- Durometer:** 75 Shore D (±5)  
**Temperature:** Listed above

## Nylon



- Excellent load capacity
  - Excellent impact strength
  - **WNY** wheels excellent for clean rooms
  - Superior in wet environments, resistant to most chemicals
- Durometer:** 85 Shore D (±5)  
**MAX Temp:** -40°F to +250°F  
**WNY Temp:** -20°F to +250°F

## Thermo-Rubber Flat and Donut



- Non-marking thermoplastic rubber tread chemically bonded to polypropylene core
  - Good floor protection
  - Quiet, shock absorbing ride
  - Good in wet environments, resistant to most chemicals
- Durometer:** 70 Shore A (±5)  
**Temperature:** -40°F to +180°F

## Thermo-Urethane



- Polyurethane tread mechanically locked to polypropylene core.
  - Attractive, all-purpose wheel.
  - Good in wet applications, resistant to most chemicals.
- Durometer:** 95 Shore A (±5)  
**Temperature:** -45°F to +180°F

## Solid Polyurethane



- Molded from a high strength urethane compound
  - Solid wheel eliminates any possibility of tread separation
  - Good in wet applications, resistant to most chemicals
- Durometer:** 55 Shore D (±5)  
**Temperature:** -22°F to +158°F

## Polypropylene HD



- Economical construction and light in weight
  - Good load capacity and impact strength
  - Superior in wet environments, resistant to most chemicals
- Durometer:** 70 Shore D (±5)  
**Temperature:** -45°F to +180°F

## Bearing Options



**Stainless Roller (R)**

(default bearing unless otherwise specified)



**Stainless (266°F) Pedestal Precision Ball (B)**

(an excellent way to achieve better ergonomics)



**2-Piece Delrin® (D)**

(\*standard in any High-Temp Delrin Bearing caster or wheel selection)



**300 F High-Temp Nylon\* (N)**



**1-Piece Delrin® (Z)**

1-piece Delrin® is standard when ordering cam brakes

Not all bearing options are available in all casters or wheels. Please follow ordering instructions provided on the following pages to change the standard bearing in a complete caster or wheel to one of the optional bearing choices available.

## Retainer Washers (for roller bearing wheels)

Plastic retainer washers come standard on wheels with roller bearings.

High-Temp roller bearing wheels (HRT and RET) come standard with Stainless Steel Thrust and Retainer Washers

### Standard



**Plastic Retainer Washer**

### Stainless



**Stainless Steel Thrust and Retainer Washer**

## Sealed Raceway Option

Rubber raceway seals keep dirt out and grease in for a longer caster life. To order, add **RS** after **ES** in swivel caster part number (example: SSESRS6X2TPR). Seals are rated for applications up to 140°F.



# Caster Specifications



To change standard bearing or add brakes, add (+) the desired code to the end of the Part #; example: SSES4X2TPRBWFB

Wheel Dia.	Tread Width	Wheel Type	Load Capacity (lbs)	Mount Height	Swivel Radius*	Standard Bearing	Swivel Caster Part #	Rigid Caster Part #	Bearing Options	Brake Options
4"	2"	HRT High-Temp Glass-Filled Nylon	800	5-5/8"	Swivel Models 3-3/8"	Roller	SSES4X2HRT	SSER4X2HRT	(+) B, N	(+) TBK, CAM <sup>2</sup>
		KWL Solid Polyurethane K	700	5-5/8"		Ball	SSES4X2KWLB	SSER4X2KWLB	(+) D <sup>3</sup>	(+) TBK, WFB, CAM
		MAX Maxim® Glass-Filled Nylon	800	5-5/8"		Roller	SSES4X2MAX	SSER4X2MAX	(+) B, D <sup>1</sup>	(+) TBK, WFB, CAM
		POD Polypropylene HD	500	5-5/8"		Roller	SSES4X2POD	SSER4X2POD	(+) B, D <sup>1</sup>	(+) TBK, WFB, CAM
		RET RETORT Glass-Filled Polypro.	500	5-5/8"		Roller	SSES4X2RET	SSER4X2RET	(+) B, N	(+) TBK, CAM <sup>2</sup>
		TPR Thermo-Rubber (Flat)	300	5-5/8"		Roller	SSES4X2TPR	SSER4X2TPR	(+) B, D <sup>1</sup>	(+) TBK, WFB, CAM
		TPD Thermo-Rubber (Donut)	300	5-5/8"		Roller	SSES4X2TPD	SSER4X2TPD	(+) B, D <sup>1</sup>	(+) TBK, WFB, CAM
		TUM Thermo-Urethane	500	5-5/8"		Roller	SSES4X2TUM	SSER4X2TUM	(+) B, D <sup>1</sup>	(+) TBK, WFB, CAM
		WNY White Nylon	900	5-5/8"		Roller	SSES4X2WNY	SSER4X2WNY	(+) B, D <sup>1</sup>	(+) TBK, WFB, CAM
5"	2"	HRT High-Temp Glass-Filled Nylon	900	6-1/2"	Swivel Models 4"	Roller	SSES5X2HRT	SSER5X2HRT	(+) B, N	(+) TBK, CAM <sup>2</sup>
		KWL Solid Polyurethane K	900	6-1/2"		Roller	SSES5X2KWLB	SSER5X2KWLB	(+) D <sup>3</sup>	(+) TBK, WFB, CAM
		MAX Maxim® Glass-Filled Nylon	900	6-1/2"		Roller	SSES5X2MAX	SSER5X2MAX	(+) B, D <sup>1</sup>	(+) TBK, WFB, CAM
		POD Polypropylene HD	650	6-1/2"		Roller	SSES5X2POD	SSER5X2POD	(+) B, D <sup>1</sup>	(+) TBK, WFB, CAM
		RET RETORT Glass-Filled Polypro.	650	6-1/2"		Roller	SSES5X2RET	SSER5X2RET	(+) B, N	(+) TBK, CAM <sup>2</sup>
		TPR Thermo-Rubber (Flat)	350	6-1/2"		Roller	SSES5X2TPR	SSER5X2TPR	(+) B, D <sup>1</sup>	(+) TBK, WFB, CAM
		TPD Thermo-Rubber (Donut)	350	6-1/2"		Roller	SSES5X2TPD	SSER5X2TPD	(+) B, D <sup>1</sup>	(+) TBK, WFB, CAM
		TUM Thermo-Urethane	600	6-1/2"		Roller	SSES5X2TUM	SSER5X2TUM	(+) B, D <sup>1</sup>	(+) TBK, WFB, CAM
		WNY White Nylon	900	6-1/2"		Roller	SSES5X2WNY	SSER5X2WNY	(+) B, D <sup>1</sup>	(+) TBK, WFB, CAM
6"	2"	HRT High-Temp Glass-Filled Nylon	900	7-1/2"	Swivel Models 4-3/4"	Roller	SSES6X2HRT	SSER6X2HRT	(+) B, N	(+) TBK, CAM <sup>2</sup>
		KWL Solid Polyurethane K	900	7-1/2"		Ball	SSES6X2KWLB	SSER6X2KWLB	(+) D <sup>3</sup>	(+) TBK, WFB, CAM
		MAX Maxim® Glass-Filled Nylon	900	7-1/2"		Roller	SSES6X2MAX	SSER6X2MAX	(+) B, D <sup>1</sup>	(+) TBK, WFB, CAM
		POD Polypropylene HD	700	7-1/2"		Roller	SSES6X2POD	SSER6X2POD	(+) B, D <sup>1</sup>	(+) TBK, WFB, CAM
		RET RETORT Glass-Filled Polypro.	700	7-1/2"		Roller	SSES6X2RET	SSER6X2RET	(+) B, N	(+) TBK, CAM <sup>2</sup>
		TPR Thermo-Rubber (Flat)	500	7-1/2"		Roller	SSES6X2TPR	SSER6X2TPR	(+) B, D <sup>1</sup>	(+) TBK, WFB, CAM
		TPD Thermo-Rubber (Donut)	500	7-1/2"		Roller	SSES6X2TPD	SSER6X2TPD	(+) B, D <sup>1</sup>	(+) TBK, WFB, CAM
		TUM Thermo-Urethane	720	7-1/2"		Roller	SSES6X2TUM	SSER6X2TUM	(+) B, D <sup>1</sup>	(+) TBK, WFB, CAM
		WNY White Nylon	900	7-1/2"		Roller	SSES6X2WNY	SSER6X2WNY	(+) B, D <sup>1</sup>	(+) TBK, WFB, CAM
8"	2"	HRT High-Temp Glass-Filled Nylon	900	9-1/2"	Swivel Models 6-1/8"	Roller	SSES8X2HRT	SSER8X2HRT	(+) B, N	(+) TBK, CAM <sup>2</sup>
		KWL Solid Polyurethane K	900	9-1/2"		Ball	SSES8X2KWLB	SSER8X2KWLB	(+) D <sup>3</sup>	(+) TBK, WFB, CAM
		MAX Maxim® Glass-Filled Nylon	900	9-1/2"		Roller	SSES8X2MAX	SSR8X2MAX	(+) B, D <sup>1</sup>	(+) TBK, WFB, CAM
		POD Polypropylene HD	900	9-1/2"		Roller	SSES8X2POD	SSER8X2POD	(+) B, D <sup>1</sup>	(+) TBK, WFB, CAM
		RET RETORT Glass-Filled Polypro.	900	9-1/2"		Roller	SSES8X2RET	SSER8X2RET	(+) B, N	(+) TBK, CAM <sup>2</sup>
		TPR Thermo-Rubber (Flat)	600	9-1/2"		Roller	SSES8X2TPR	SSER8X2TPR	(+) B, D <sup>1</sup>	(+) TBK, WFB, CAM
		TPD Thermo-Rubber (Donut)	600	9-1/2"		Roller	SSES8X2TPD	SSER8X2TPD	(+) B, D <sup>1</sup>	(+) TBK, WFB, CAM
		TUM Thermo-Urethane	800	9-1/2"		Roller	SSES8X2TUM	SSER8X2TUM	(+) B, D <sup>1</sup>	(+) TBK, WFB, CAM
		WNY White Nylon	900	9-1/2"		Roller	SSES8X2WNY	SSER8X2WNY	(+) B, D <sup>1</sup>	(+) TBK, WFB, CAM

<sup>1</sup> To order 1-Piece Delrin® (Z) bearing, utilize **Z** in place of **D** when adding bearing option code to part #; example: SSES8X2PODZ. 1-Piece Delrin® (Z) bearing must be utilized when ordering Delrin® bearings with CAM brake.

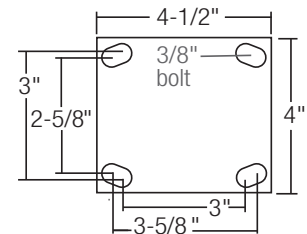
<sup>2</sup> CAM brake not compatible with High-Temp Nylon (N) bearing; utilize Stainless Roller (R) bearing for High-Temp Cam brake requirements or change to **TBK** brake to utilize **N** bearing.

<sup>3</sup> Replace **B** with **D** in part number to order Delrin® bearing on Solid Polyurethane K wheels; then add optional brake code.

\*Note: Swivel radius shown in above table is for standard swivel plate models; for brake swivel radius see table to right.

Wheel Diameter	Brake Swivel Radius		
	Wheel Face Brake (WFB)	Tread Lock Brake (TBK)	Cam Brake (CAM)
4"	6-1/4"	4"	5"
5"	6-7/8"	4-1/4"	5-1/8"
6"	7-5/8"	4-3/4"	6-1/4"
8"	8-1/2"	6-1/8"	6-3/4"

### Top Plate Dimensions



SSES5X2HRT    SSES6X2TPDWFB    SSES6X2TUMCAM    SSES6X2PODTBK    SSER6X2KWLB    SSES6X2TPRCAM    SSES6X2WNY    SSES6X2MAXWFB    SSES6X2TUM



## E-Line Stainless Steel Components

### Swivel and Rigid Rigs



Wheel Dia.	Tread Width	*Load Capacity (lbs)	Mount Height	Swivel Caster Part #	Rigid Caster Part #
4"	2"	900	5-5/8"	RIG4X2ESSS	RIG4X2ERSS
5"	2"	900	6-1/2"	RIG5X2ESSS	RIG5X2ERSS
6"	2"	900	7-1/2"	RIG6X2ESSS	RIG6X2ERSS
8"	2"	900	9-1/2"	RIG8X2ESSS	RIG8X2ERSS

### Wheels



Wheel Dia.	Tread Width	Wheel Type	Load Capacity (lbs)	Bore	Standard Bearing	Standard Wheel Part #*
4"	2"	HRT High-Temp Glass-Filled Nylon	800	1/2"	Roller	WH4X2HRTRSS <sup>1</sup>
		KWL Solid Polyurethane K	700	1/2"	Ball	WH4X2KWLBS <sup>2</sup>
		MAX Maxim® Glass-Filled Nylon	800	1/2"	Roller	WH4X2MAXRSS
		POD Polypropylene HD	500	1/2"	Roller	WH4X2PODRSS
		RET RETORT Glass-Filled Polypropylene	500	1/2"	Roller	WH4X2RETRSS <sup>1</sup>
		TPR Thermo-Rubber (Flat)	300	1/2"	Roller	WH4X2TPRRSS
		TPD Thermo-Rubber (Donut)	300	1/2"	Roller	WH4X2TPDRSS
		TUM Thermo-Urethane	500	1/2"	Roller	WH4X2TUMRSS
		WNY White Nylon	900	1/2"	Roller	WH4X2WNYRSS
5"	2"	HRT High-Temp Glass-Filled Nylon	1000	1/2"	Roller	WH5X2HRTRSS <sup>1</sup>
		KWL Solid Polyurethane K	1000	1/2"	Ball	WH5X2KWLBS <sup>2</sup>
		MAX Maxim® Glass-Filled Nylon	1000	1/2"	Roller	WH5X2MAXRSS
		POD Polypropylene HD	650	1/2"	Roller	WH5X2PODRSS
		RET RETORT Glass-Filled Polypropylene	650	1/2"	Roller	WH5X2RETRSS <sup>1</sup>
		TPR Thermo-Rubber (Flat)	350	1/2"	Roller	WH5X2TPRRSS
		TPD Thermo-Rubber (Donut)	350	1/2"	Roller	WH5X2TPDRSS
		TUM Thermo-Urethane	600	1/2"	Roller	WH5X2TUMRSS
		WNY White Nylon	1000	1/2"	Roller	WH5X2WNYRSS
6"	2"	HRT High-Temp Glass-Filled Nylon	1200	1/2"	Roller	WH6X2HRTRSS <sup>1</sup>
		KWL Solid Polyurethane K	1200	1/2"	Ball	WH6X2KWLBS <sup>2</sup>
		MAX Maxim® Glass-Filled Nylon	1200	1/2"	Roller	WH6X2MAXRSS
		POD Polypropylene HD	700	1/2"	Roller	WH6X2PODRSS
		RET RETORT Glass-Filled Polypropylene	700	1/2"	Roller	WH6X2RETRSS <sup>1</sup>
		TPR Thermo-Rubber (Flat)	500	1/2"	Roller	WH6X2TPRRSS
		TPD Thermo-Rubber (Donut)	500	1/2"	Roller	WH6X2TPDRSS
		TUM Thermo-Urethane	720	1/2"	Roller	WH6X2TUMRSS
		WNY White Nylon	1200	1/2"	Roller	WH6X2WNYRSS
8"	2"	HRT High-Temp Glass-Filled Nylon	1400	1/2"	Roller	WH8X2HRTRSS <sup>1</sup>
		KWL Solid Polyurethane K	1500	1/2"	Ball	WH8X2KWLBS <sup>2</sup>
		MAX Maxim® Glass-Filled Nylon	1400	1/2"	Roller	WH8X2MAXRSS
		POD Polypropylene HD	900	1/2"	Roller	WH8X2PODRSSs
		RET RETORT Glass-Filled Polypropylene	900	1/2"	Roller	WH8X2RETRSS <sup>1</sup>
		TPR Thermo-Rubber (Flat)	600	1/2"	Roller	WH8X2TPRRSS
		TPD Thermo-Rubber (Donut)	600	1/2"	Roller	WH8X2TPDRSS
		TUM Thermo-Urethane	800	1/2"	Roller	WH8X2PHNRSS
		WNY White Nylon	1200	1/2"	Roller	WH8X2WNYRSS

\*Note: Stainless Steel Roller bearing (includes spanner bushing) is standard for all above wheels except KWL models which include Stainless Pedestal Precision Ball bearings. For optional Stainless Pedestal Precision Ball bearings, change the third to last letter in part # from R to B; for Delrin® bearing change the third to last letter from R to D (for 2-Piece) or R to Z (for 1-Piece), both Delrin® options include spanner bushing. High-Temp roller bearing models come standard with stainless retaining and thrust washers, all other roller bearing models come standard with plastic retainer washers. To order blank wheel (1-3/16" bore with no bearing), change the last three characters in wheel part # to 19; example: WH6X2TPR19.

<sup>1</sup> High-Temp Nylon bearing can be ordered by changing third to last letter in part # from R to N; Delrin® options not available due to temperature constraints.

<sup>2</sup> KWL wheel standard with Stainless Pedestal Precision Ball bearing; see above note\* to order with Delrin bearing option.

### Stainless Steel Floor Locks



Wheel Dia.	Caster Height	Retracted Clearance	Approx. Weight (Lbs)	Wheel Part # (Plain bore)
4	5-5/8"	3/4"	3-1/4"	FL4ESS
5	6-1/2"	3/4"	3-1/2"	FL5ESS
6	7-1/2"	3/4"	3-3/4"	FL6ESS
8	9-1/2"	3/4"	4"	FL8ESS

### Stainless Steel Brakes

All brake kits include zerk axle, nut and necessary hardware to install on swivel or rigid rigs.

#### Tread Lock Brake (TBK)



TBK4X2ESS	4" models
TBK5X2ESS	5" models
TBK6X2ESS	6" models
TBK8X2ESS	8" models

#### Wheel Face Brake (WFB)



WFB4X2ESS	4" models
WFB5X2ESS	5" models
WFB6X2ESS	6" models
WFB8X2ESS	8" models

#### Cam Brake\* (CAM)



CAMXX2SSS	Short pedal Fits all diameters
CAMXX2LSS	Long pedal Fits all diameters

\*Can only be used with Roller Bearing or 1-piece Delrin® bearing wheels.

### Hardware (All hardware parts sold per piece, not sets)



Zerk Axle (Stainless Steel)  
1/2-13 x 3-3/8

AXLEZRKEX2SS



Nut (Stainless Steel)  
1/2-13

AXLENUTEX2SS



Spanner bushing (Stainless Steel)  
1/2 X 3/4 x 2-7/16

SPANNEREX2SS



Retaining Washer (Plastic)

WHLCAPPLEX2SS



Retaining<sup>1</sup> & Thrust<sup>2</sup> Washer (Stainless)

1RETAINEX2SS  
2THRUSTEX2SS



Stainless Steel Roller bearing  
3/4 I.D. (Use With Bushing For 1/2 I.D.)

BRGCROLLEX2SS



Stainless Steel Pedestal Precision Ball bearing

BRGPBALLEX2SS



Flanged Delrin® Bearing  
3/4 I.D. (Use With Spanner For 1/2 I.D.)

BRGDELRSSEX2



High Temp Flanged Nylon Bearing  
3/4 I.D. (Use With Spanner For 1/2 I.D.)

BRGNYLONEX2HT



1 Piece Delrin bearing  
3/4 I.D. (Use With Spanner For 1/2 I.D.)

BRGDELRNEX21PC

### Raceway Seals

Upper and Lower seals available on swivel caster models

(Sold as set).



RCWYSEALEX2

### Stainless Steel

#### 4 Position

#### Swivel Lock

Lock and unlock swivel for easy steering



SWVLOCKX2SS

# ***PEMCO***<sup>®</sup>

*Shopping Cart Casters  
& Wheels*



## Pemco Shopping Cart



### Features

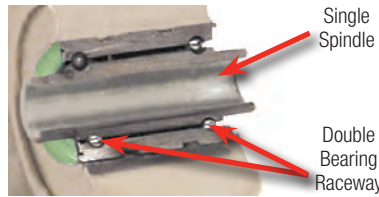
- Considered by many to be the standard of the industry.
- Wheel tread is mechanically locked to core. On KasterKat models wheel tread is also chemically bonded.
- Many Pemco models feature the patented sealed bearing features double ball raceway that is insert-molded into the hub. The single spindle design cannot become misaligned with use.

### Options

- Anti-static and self-braking models available.
- Caster finish options including standard zinc plating, PemCoat and Precision Hollow Rivet.
- Wheel tread options including polyurethane, TPR and anti-static polyurethane.

### Pemco Bearing Difference

#### Legacy Single Spindle Bearing



- Bearing is insert-molded into the polypropylene hub. This bearing is a single spindle design that cannot become misaligned with use. It is also sealed on both sides after being pre-lubricated with high quality grease.

#### New Dual Precision Bearing



Pemco now offers a new dual precision bearing for smooth, quiet rolling. This bearing is also pressed into the hub for greater durability and longer service life.

### Wheel Choices



The **KasterKat** premium features a molded, red annular ring mixed with polyurethane, between the hub and our premium polyurethane tread. This process provides both a chemical bond and a mechanical lock between the tread and hub.



**Polykat** wheels features a polyurethane tread mechanically locked to a polypropylene core. This design helps prevent tread separation.



**QuietKat** wheels are very durable, roll easy and are well suited for a variety of applications. The wheel cushions your ride over rough surfaces, providing excellent shock absorption. The softer 88A Durometer TPR tread design will not mark your floors.



**SuperKat** wheels feature a soft natural rubber tread material along with a more rounded tread shape. This design allows the wheel to rotate as it is pulled sideways by cart pusher machines. Because the wheel is allowed to spin, even with sharp turns, it is much more resistant to flat spotting compared to conventional wheels. This design has been used successfully in Europe for over 20 years.





# Pemco Shopping Cart

Continued from previous page

Wheel Diameter (Inches)	Tread Width (Inches)	Mounting Height (Inches)	Bearing Bore (Inches)	Bearing Type	Tread/Core Color	Thread Guard Color	Wheel Features	Dynamic Load (Pounds)	Caster Model	Wheel Model
-------------------------	----------------------	--------------------------	-----------------------	--------------	------------------	--------------------	----------------	-----------------------	--------------	-------------

## KasterKat Premium

5"	1-1/4"	5-7/8"	5/16"	Single Spindle	Dark Blue/Grey	Dark Blue	Standard	250	77679E	83119E
				Single Spindle	Grey/Grey	Grey	Standard	250	77679Y	83119Y
				Single Spindle	Dark Blue/Grey	Dark Blue	Tensioner (Self Braking)	250	77695E	83207E



## PolyKat

4"	1-1/4"	4-11/16"	5/16"	Single Precision	Dark Blue/Grey	Dark Blue	Standard	250	77687E	83194E
5"	1-1/4"	5-7/8"	5/16"	Dual Precision	Dark Blue/Grey	Dark Blue	Standard	250	77520EZ	83122EZ
				Dual Precision	Dark Grey/Black	Black	Standard	250	77688YZ	83195YZ
				Delrin	Black/Black	None	Economical	200	77142G	8161G
				Single Spindle	Dark Blue/Grey	Dark Blue	Anti-Static	250	77639E	83184E
				Single Spindle	Dark Blue/Grey	Orange	Tensioner (self-braking)	250	77662E	83190E
				Single Spindle	Dark Blue/Grey	Orange	Adjustable Tensioner	250	77692E	83202E
Single Spindle	Dark Blue/Grey	Orange	Fusion: Anti-static/Tensioner	250	77699E	83206E				



## QuietKat

5"	1-1/4"	5-7/8"	5/16"	Dual Precision	Grey/Black	Black	Standard	250	77103Y	83203YZ
				Single Spindle	Grey/Black	Black	Anti-Static	250	77123Y	83211Y
				Single Spindle	Grey/Black	Orange	Tensioner (self-braking)	250	77124Y	83212Y
				Single Spindle	Grey/Black	Orange	Fusion: Anti-static/Tensioner	250	77125Y	83219Y



## SuperKat

5"	1-1/4"	5-7/8"	5/16"	Dual Precision	Dark Blue/Grey	Dark Blue	Anti-flat spot for cart pushers	250	77146E	83224E
----	--------	--------	-------	----------------	----------------	-----------	---------------------------------	-----	--------	--------



## Wheel Features



**PolyKat Anti-Static.** Say goodbye to straps and chains. Patented anti-static wheel discharges static electricity of shopping cart every rotation of the wheel.



Standard **Tensioner** wheel reduces damage caused by rolling, unattended shopping carts. They are designed to hold unattended shopping carts on a slight slope (1-2 degrees) and slow down acceleration on greater slopes.










**Adjustable Tensioner** wheels have deceleration is pre-set at the factory for average conditions. Parking lot conditions vary widely -- the amount of deceleration can easily be field adjusted to meet customer needs.



**Fusion** wheels feature the fusion of anti-static and tensioner wheel for the ultimate in shopper comfort and protection. No field adjustment necessary.



## Corner Bumpers

Shape/Type + Material + Size Inside dimension + Durometer+Color

	Brand	Part Description	Part Number	Product Details	Additional Information
	Colson	<b>CB-PVC-2.6X2.6-85A-GY</b>	4718-00	Corner Bumper B-8 - Gray 3.5x3.5x1.0" outside Vinyl 80-85A	Inside corner dimensions 2.62x2.62"
	Colson	<b>CB-PVC-3X3-85A-GY</b>	CB-10	Corner Bumper CB-10 - Gray 4.4x4.4x1.06" rounded outside corner Vinyl 85-95A	Inside corner dimensions 3.06x3.06"
	Colson	<b>CB-PVC-3X3-85A-BK</b>	CB-10B	Corner Bumper CB-10 - Black 4.4x4.4x1.06" rounded outside corner Vinyl 85-95A	Inside corner dimensions 3.06x3.06"
	Colson	<b>CB-PVC-3.2X3.2-85A-GY</b>	CB-12	Corner Bumper CB-12 - Gray 4.04x4.04x1.0" radius outside corner Vinyl 85-95A	Inside corner dimensions 3.19x3.19"
	Colson	<b>CB-PVC-3.2X3.2-85A-BK</b>	CB-12B	Corner Bumperr CB-12 - Black 4.04x4.04x1.0" radius outside corner Vinyl 85-95A	Inside corner dimensions 3.19x3.19"
	Colson	<b>CB-PVC-3.2X3.2-85A-BR</b>	CB-12BRNTPR	Corner Bumper CB-12 - Brown 4.04x4.04x1.0" radius outside corner Vinyl 85-95A	Inside corner dimensions 3.19x3.19"
	Colson	<b>CB-TPR-3.2X3.2-70A-GY</b>	06927	Corner Bumper 3 X 3 Rounded Corner TPR 70A	Inside corner dimensions 3.0x3.0"


## End Bumpers

Shape/Type + Material + Diameter + Durometer + Color

	Brand	Part Description	Part Number	Product Details
	Colson	<b>EB-PVC-3.25-85A-GY</b>	4714-00	End Bumper Donut B-1 Gray 3.25"diameter .344 HOLE .97" Tall Vinyl 80-85A
	Colson	<b>EB-PVC-3.25-85A-BK</b>	4714-01	End Bumper Donut B-1 Black 3.25"diameter .344 HOLE .97" Tall Vinyl 80-85A
	Colson	<b>EB-TPR-3.25-70A-GY</b>	06901	End Bumper 3.25 O.D. Gray TPR .34" hole .88" Tall 70A
	Colson	<b>EB-TPR-3.25-70A-BK</b>	03050.43	End Bumper 3.25 OD Black Performa .34" hole .88" Tall 70A
	Colson	<b>EB-TPR-1.75-70A-GY</b>	06901.01	End Bumper 1.75 O.D. Gray TPR .25" Hole .5" Tall 70A



## Rolling Bumpers

Shape/Type + Material + Diameter + ID + Durometer + Color

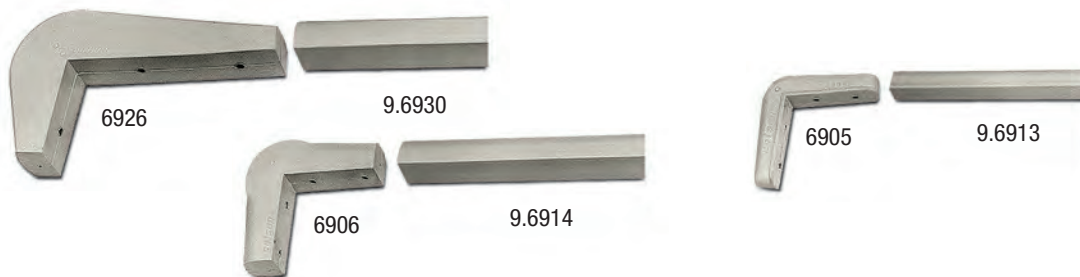
	Brand	Part Description	Part Number	Product Details
	Colson	<b>RB-PVC-5-.375-85A-GY</b>	RB-5.06	5 in Rolling Bumper 3/8" ID insert
	Colson	<b>RB-PVC-5-.50-85A-GY</b>	RB-5-08	5 in Rolling Bumper 1/2" ID insert
	Colson	<b>RB-PVC-5-.63-85A-GY</b>	RB-5-10	5 in Rolling Bumper 5/8" ID insert

## Tubing Bumpers

Shape/Type + Material + Diameter + ID + Durometer + Color

	Brand	Part Description	Part Number	Product Details
	Colson	<b>TB-PVC-3.5x1R-85A-GY</b>	TB3.5R	Tubing Bumper Round 3.5" diameter with 1" ID round hole
	Colson	<b>TB-PVC-3.5x1SQ-85A-GY</b>	TB3.5S	Tubing Bumper Square 3.5" diameter with 1" ID square hole

**Corner and Strip Bumpers**



Shape/Type+ Material + Dimensions+ Durometer+Color + Specify Length(if required)

Brand	Part Description	Part Number	Product Details
Colson	<b>CCB-PVC-6x3x1.5-85A-GY</b>	06926	Corner Bumper 6 X 3 with pre drilled insert
Colson	<b>SB-PVC-1.5-85A-GY-NI</b>	66930	Bumper 1.50PVC Strip for 06926 without insert - 50 Feet
Colson	<b>CCB-PVC-2.6x2.6x1.13-85A-GY</b>	06906	Bumper-A Corner 2.6X2.6 with insert
Colson	<b>SB-PVC-1.13-85A-GY-NI</b>	66914	Bumper 1.13PVC Strip for 06906 without insert - 50 Feet
Colson	<b>CCB-PVC-2.5x2.5x.75-85A-GY</b>	06905	Bumper-A Corner 2.5X2.5 with insert
Colson	<b>SB-PVC-.75-85A-GY-NI</b>	66913	Bumper 0.75 PVC Strip for 06905 without insert - 50 Feet

**Sockets**

Part Number Description Codes			
Material	Shape	Fitting Type Compatibility	Tube ID
RT= Glass Filled Nylon	RD = Round	GN = Grip Neck Stem	(number)
PE= Polyethylene	SW = Square	GR = Grip Ring Stem	

**Round Tube Sockets**



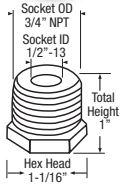
Brand	Part Number	Part Description	Material	Tubing Gauge	Socket OD	Tube ID (Dia)	Compatible Grip Ring Fastening	Base Dimension	
Shepherd	<b>003027</b>	PERDGN-433	Polyethylene	9/16" 16 Gauge	0.45	0.433	223, 211, 291, 273, GR01, GR02, GR10, GRS1, GRS2	0.94" diameter	
Shepherd	<b>002460</b>	PERDGR-870	Polyethylene	1" - 16 Gauge	0.894	0.870		1.25" diameter	
Shepherd	<b>002473</b>	PERDGR-902	Polyethylene	1" - 18 Gauge	0.924	0.902		1.25" diameter	
Shepherd	<b>43441</b>	PERDGR-767	Polyethylene	Hole Required 0.767 - 0.855"	0.807	0.767		1.19" diameter	
Shepherd	<b>43446</b>	PERDGR-872	Polyethylene	1-1/16" - 13 Gauge	0.894	0.872		1.25" diameter	
Shepherd	<b>43447</b>	PERDGR-846	Polyethylene	Hole Required 0.846 - 0.855"	0.868	0.846		1.25" diameter	
Shepherd	<b>43400</b>	RTRDGR-777	Glass Filled Nylon	7/8" - 18 Gauge	0.782	0.777		0.88" diameter	
Shepherd	<b>43401</b>	RTRDGR-872	Glass Filled Nylon	1-1/16" - 13 Gauge	0.877	0.872		1.06" diameter	
Shepherd	<b>43486</b>	PERDGR-904	Polyethylene	1" - 18 Gauge	0.928	0.904		1.25" diameter	
Shepherd	<b>43403</b>	RTRDGR-902	Glass Filled Nylon	1" - 18 Gauge	0.907	0.902		1.0" diameter	
Shepherd	<b>43404</b>	RTRDGR-1072	Glass Filled Nylon	Hole Required 1.072"	1.077	1.072		1.25" diameter	
Shepherd	<b>43405</b>	RTRDGR-1120	Glass Filled Nylon	1-1/4" - 16 Gauge	1.125	1.12		1.25" diameter	
Shepherd	<b>43515</b>	RTRDGR-1131	Glass Filled Nylon	Hole Required 1.310"	1.315	1.1310		1.5" diameter	
Shepherd	<b>43520</b>	RTRDGR-1490	Glass Filled Nylon	Hole Required 1.49"	1.50	1.49		1.63" diameter	
Shepherd	<b>43481</b>	PERDGR-584	Polyethylene	Hole Required 0.584	0.586	0.584		0.84" diameter	
Shepherd	<b>38393</b>	STRDGR-600	Steel	0.687 - 17 Gauge	0.595	0.6		0.94" diameter	
Shepherd	<b>618659</b>	STRDGR-590	Steel -Welded	Hole Required 0.59 x 1.5"	0.577	0.59		0.996" diameter	
Shepherd	<b>002255</b>	STRDGR-560x1150	Steel - for Wood (0.25" screws to attach)	Hole Required 9/16 x 1.5" w/ 4 mounting holes 1/4" mounting screw					2.13" diameter
Shepherd	<b>38372</b>	STRDGN-380x1630	Steel - for Wood press to attach	Hole Required 3/8 x 1-5/8	NA	NA		302	0.75" diameter

## Square Tube Sockets



Brand	Part Number	Part Description	Material	Tubing Gauge	Socket OD	Tube ID (Dia)	Compatible Grip Ring Fastening	Base Dimension
Shepherd	<b>42254</b>	SQRTGR-902A	Glass Filled Nylon	1" - 18 Gauge	0.916	0.902	223, 211, 291, 273, GR01, GR02, GR10, GRS1, GRS2	1.03" x 1.03"
Shepherd	<b>43530</b>	SQRTGR-657	Glass Filled Nylon	.75" - 18 Gauge	0.662	0.657		.75" x .75"
Shepherd	<b>43531</b>	SQRTGR-620	Glass Filled Nylon	.75" - 16 Gauge	0.620	0.62		.75" x .75"
Shepherd	<b>43484</b>	SQPEGR-870	Polyethylene	1" - 16 Gauge	0.917	0.87		1.13" x 1.13"
Shepherd	<b>43507</b>	SQRTGR-880	Glass Filled Nylon	1.03" - .080 wall	0.892	0.88		1.0" x 1.0"
Shepherd	<b>43491</b>	SQRTGR-902B	Glass Filled Nylon	1" - 18 Gauge	0.900	0.902		1.13" x 1.13"
Shepherd	<b>43521</b>	SQRTGR-1152A	Glass Filled Nylon	1.25" - 18 Gauge	1.157	1.152		1.28" x 1.28"
Shepherd	<b>43522</b>	SQRTGR-1152B	Glass Filled Nylon	1.25" - 18 Gauge	1.157	1.152		1.53" x 1.53"
Shepherd	<b>43518</b>	SQRTGR-1140	Glass Filled Nylon	1.5" - 7 Gauge	1.145	1.14		1.53" x 1.53"
Shepherd	<b>43519</b>	SQRTGR-1402	Glass Filled Nylon	1.5" - 18 Gauge	1.407	1.402		1.53" x 1.53"

## Pipe Thread Socket



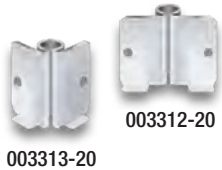
Brand	Part Number	Note:	Material	Hex Head	Socket OD	Socket ID	Total Height
Shepherd	<b>10003</b>	Works with any 741, 748, TS01, TS02, TS03 Stem	Steel	1-1/16"	3/4" NPT	1/2"-13	1"

## Metal Tee Nut



Brand	Part Number	Socket Number	Material	Hole Required	Compatible Grip Ring Fastening
Shepherd	<b>002348</b>	Nut SBW33	Steel	3/8"	525,532, 545, 507

## Corner Bracket



Brand	Part Number	Description	Material	Hole diameter x Height	Compatible Grip Ring Fastening
Shepherd	<b>003313-20</b>	90° w/ 11/32" holes and tabs	Steel - unplated	0.34 x 1.5"	223, 211, 291, 273, GR01, GR02, GR10, GRS1, GRS2
Shepherd	<b>003312-20</b>	180°w/ 11/32" holes and tabs	Steel - unplated	0.34 x 1.5"	

**Round and Square Nylon Expander kits**



**Round Tube**

MedCaster	Rhombus Expander	Dimensions	Type	Kit PN by Quantity (20pc and 50pc are Bulk Pack) Without Bolt			Kit Description	Bill of Materials Components				
				1pc kit	20pc kit	50pc kit		Expander	Top Cone	Bottom Cone	Washer	Nut
<b>XRN1</b>	R66	.70-.78" 17.8-19.7mm	Round Tube	907170	907182	907194	R66 - XRN1 Without Bolt	09386	09327	09326	617099	NA
<b>XRN2</b>	R67	.78-.85" 19.8-21.7mm	Round Tube	907171	907183	907195	R67 - XRN2 Without Bolt	09387	09327	09326	617099	NA
<b>XRN3</b>	R68	.86-.97" 21.8-24.7mm	Round Tube	907172	907184	907196	R68 - XRN3 Without Bolt	09388	09328	09323	617099	09474
<b>XRN4</b>	R69	.97-1.13" 24.8-28.7mm	Round Tube	907173	907185	907197	R69 - XRN4 Without Bolt	09390	09315	09324	617099	09474
<b>XRN5</b>	R70	1.14-1.29" 28.8-32.7mm	Round Tube	907174	907186	907198	R70 - XRN5 Without Bolt	09392	09316	09325	617099	09474

Requires M12 bolt for installation.



**Square Tube**

MedCaster	Rhombus Expander	Dimensions	Type	Kit PN by Quantity (20pc and 50pc are Bulk Pack) Without Bolt			Kit Description	Bill of Materials Components				
				1pc kit	20pc kit	50pc kit		Expander	Top Cone	Bottom Cone	Washer	Nut
<b>XSN1</b>	R71	.75-.81" 19.04-20.62mm	Square Tube	907175	907187	907199	R71 - XSN1 Without Bolt	09387	09327	09326	617099	integrated into cone
<b>XSN2</b>	R72	.88-.94" 22.21-23.79mm	Square Tube	907176	907188	907200	R72 - XSN2 Without Bolt	09389	09327	09326	617099	integrated into cone
<b>XSN3</b>	R73	1.0 - 1.06" 25.4-26.99mm	Square Tube	907177	907189	907201	R73 - XSN3 Without Bolt	09389	09328	09323	617099	09474
<b>XSN5</b>	R75	1.25 - 1.31" 31.75-33.27mm	Square Tube	907178	907190	907202	R75 - XSN5 Without Bolt	09391	09315	09324	617099	09474
<b>XSN6</b>	R76	1.38 - 1.44" 35.05-36.57mm	Square Tube	907179	907191	907203	R76 - XSN6 Without Bolt	09391	09316	09325	617099	09474
<b>XSN7</b>	R77	1.5 - 1.56" 38.1-39.62mm	Square Tube	907180	907192	907204	R77 - XSN7 Without Bolt	09393	09316	09325	617099	09474
<b>XSN9</b>	R79	1.63 - 1.69" 41.4-42.93mm	Square Tube	907181	907193	907205	R79 - XSN9 Without Bolt	09394	09316	09325	617099	09474

Requires M12 bolt for installation.

**Round Rubber Expanding Adapters for Round and Square Tubes**



**Round Tube**

MedCaster	Colson Expander	Dimensions	Kit Part Number	Bill of Materials Components			
				Expander	Bottom Cone	Washer	Nut
<b>XRR1</b>	MTG40	.75-.81" (19.04-20.62mm)	05502.40 + 1/2-13 Bolt	57410.50	57410.29	57410.18	57410.01
<b>XRR2</b>	MTG41	.88-.94" (22.21-23.79mm)	05502.41 + 1/2-13 Bolt	57410.51	57410.30	57410.18	57410.02
<b>XRR3</b>	MTG42	1.0 - 1.06" (25.4-26.99mm)	05502.42 + 1/2-13 Bolt	57410.52	57410.31	57410.18	57410.03
<b>XRR4</b>	MTG43	1.13 - 1.19" (28.7-30.23mm)	05502.43 + 1/2-13 Bolt	57410.53	57410.32	57430.00	57410.04
<b>XRR5</b>	MTG44	1.25 - 1.31" (31.75-33.27mm)	05502.44 + 1/2-13 Bolt	57410.54	57410.33	57410.19	57410.05
<b>XRR6</b>	MTG45	1.38 - 1.44" (35.05-36.57mm)	05502.45 + 1/2-13 Bolt	57410.55	57410.34	57410.20	57410.06
<b>XRR7</b>	MTG46	1.5 - 1.56" (38.1-39.62mm)	05502.46 + 1/2-13 Bolt	57410.56	57410.35	57410.38	57410.07
<b>XRR8</b>	MTG47	1.63 - 1.69" (41.4-42.93mm)	05502.47 + 1/2-13 Bolt	57410.57	57410.36	57410.38	57410.37



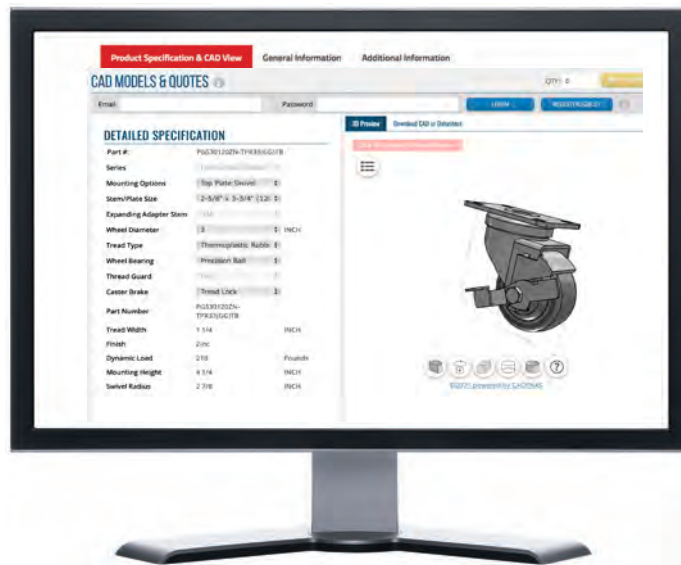
**Square Tube**

MedCaster	Colson Expander	Dimensions	Kit Part Number	Bill of Materials Components			
				Expander	Bottom Cone	Washer	Nut
<b>XSR2</b>	MTG51	.88-.94" (22.21-23.79mm)	05502.51 + 1/2-13 Bolt	57410.51	57410.30	57410.19	57410.02
<b>XSR3</b>	MTG52	1.0 - 1.06" (25.4-26.99mm)	05502.52 + 1/2-13 Bolt	57410.52	57410.31	57410.20	57410.03
<b>XSR4</b>	MTG53	1.13 - 1.19" (28.7-30.23mm)	05502.53 + 1/2-13 Bolt	57410.53	57410.32	57410.38	57410.04
<b>XSR5</b>	MTG54	1.25 - 1.31" (31.75-33.27mm)	05502.54 + 1/2-13 Bolt	57410.54	57410.33	57434	57410.05
<b>XSR6</b>	MTG55	1.38 - 1.44" (35.05-36.57mm)	05502.55 + 1/2-13 Bolt	57410.55	57410.34	57434	57410.06

NEED A CAD MODEL OR QUOTE?

**PEMCO**<sup>®</sup>

[www.PemcoCaster.com/A-line](http://www.PemcoCaster.com/A-line)



### “Caster CAD 3D” App



- Quickly configure caster models
- Download native CAD formats
- Download datasheets
- Easily share with your team



#### Pemco Casters

A Brand of Colson Group  
800-253-0868



Colson Group Brand	Action	Removed	Replace With
	<b>Removed Series</b>	Institutional 3" to 5" Diameter	PEMCO A-Line
		Institutional 6" Diameter	Colson 2 Series 6"
		Starlet Series	Planet (closest)
		Satellite Series	Planet (closest)
		Cosmo Series	Saturn (closest)
		Nova Series	Saturn (closest)
	<b>Removed Colors</b>	Satin Chrome - decorative casters	Not Applicable, high MOQ required
		Brass plate - Pacer	
		Satin Chrome - Pacer	
	<b>ALBION</b>	<b>Removed Series</b>	02
E5			PEMCO E-Line Stainless
68			Albion 38 Series
05			Defender
41			Albion 42
216			115 (Closest)
263			Not Applicable
281			Not Applicable
290			Albion 415 Series
295			Albion 615 Series
Bassick Honcho			Not Applicable
Jarvis Air Cargo			Albion 03
<b>Re-moved, but still available</b>			DC
		P2	P2
		04	04
		63	63
		92	92
		292	292
		93	93
293		293	

Colson Group Brand	Action	Removed	Replace With	
	<b>Removed Series</b>	Enforcer 4 & 6	Albion 110	
		Enforcer 7 & 8	Albion 310	
		4 Series SS	Defender D4	
		4 Series Encore	4 Series or Pemco E-line	
		4 Series Encore SS	Pemco E-Line SS	
	<b>Removed Wheels</b>	Commander	Albion NX	
		Conquest	CG-Max	
		Triumph	CG-Max	
		Forged Steel	Albion FS	
	<b>Removed 2.5" - 3" Wide Tread Wheels</b>	Mold on Rubber	Albion MR	
Mold on Polyurethane		Albion PY		
Phenolic		Albion TM		
Cast Iron		Albion CI		
V-Groove		Albion VG/VL		
		<b>Removed Series</b>	TW	Shepherd PUT
			GT	Shepherd PSF
			DL	Not Applicable
			SL	MedCaster BBTEK / DT
			Optimus	MedCaster Avant 75mm
	CH		MedCaster FX Chrome	
	CX		MedCaster FX Chrome	
	CP		Not Applicable	
	SS (2" Wide)		Defender D4	
	Original SX		MedCaster SX Gen 2	
	AC		MedCaster SX Gen 2	
	MP - Marquee		MedCaster Avant	
	PG		MedCaster Avant	
	PT		MedCaster TT & CT	
	MU		MedCaster TT & CT	
	PC		MedCaster 390 Series (Rhombus)	
	PP		MedCaster 391 Series (Rhombus)	
	PL		MedCaster TT & CT	
	MB		MedCaster 390 & 391 (Rhombus)	
	389		Not Applicable	
399	Available from Colson EU			
367	MedCaster FX Chrome			



ALBION



COLSON



SHEPHERD



MEDCASTER



PEMCO



EVERYTHING



Visit [www.colsongroupusa.com](http://www.colsongroupusa.com) to discover how easy it is to choose the right caster for your specific application.

**colson** GROUP *ROLLING AT THE SPEED OF LIFE*

INDUSTRIES ▾ CASTER SOLUTIONS ▾ CASTERS BY CAPACITY ▾ WHEELS ▾ CAPABILITIES ▾ RESOURCES ▾ CONTACT COLSON ▾

SEARCH

**THE GLOBAL LEADER  
IN CASTER AND WHEEL SOLUTIONS**

**QUICK SEARCH  
BY INDUSTRY SOLUTIONS**

CASTERS WHEELS

 Aerospace	 Air Cargo	 Automotive	 Data Centers
 Food Service	 Furniture	 Health/Medical	 Horticulture & Gardens
 Hospitality	 Institutional	 Laundry	 Marine
 Retail Environment	 Robotics	 Tool Storage	 Warehousing & Distribution

SEARCH INDUSTRY PRODUCTS



To find all Colson Group literature at one convenient location visit [www.castercatalogs.com](http://www.castercatalogs.com)

Innovative caster solutions from the brands you know and trust! [www.colsongroupusa.com](http://www.colsongroupusa.com) • 800-253-0868

