

INTRODUCING AVANT^{SERIES}

MedCaster™

QUIET • CLEAN • SMOOTH

ULTRA QUIET

Precision ball bearing swivel and wheel **provide quieter mobility** than competitors' double ball bearing raceway design

ERGONOMIC PERFORMANCE

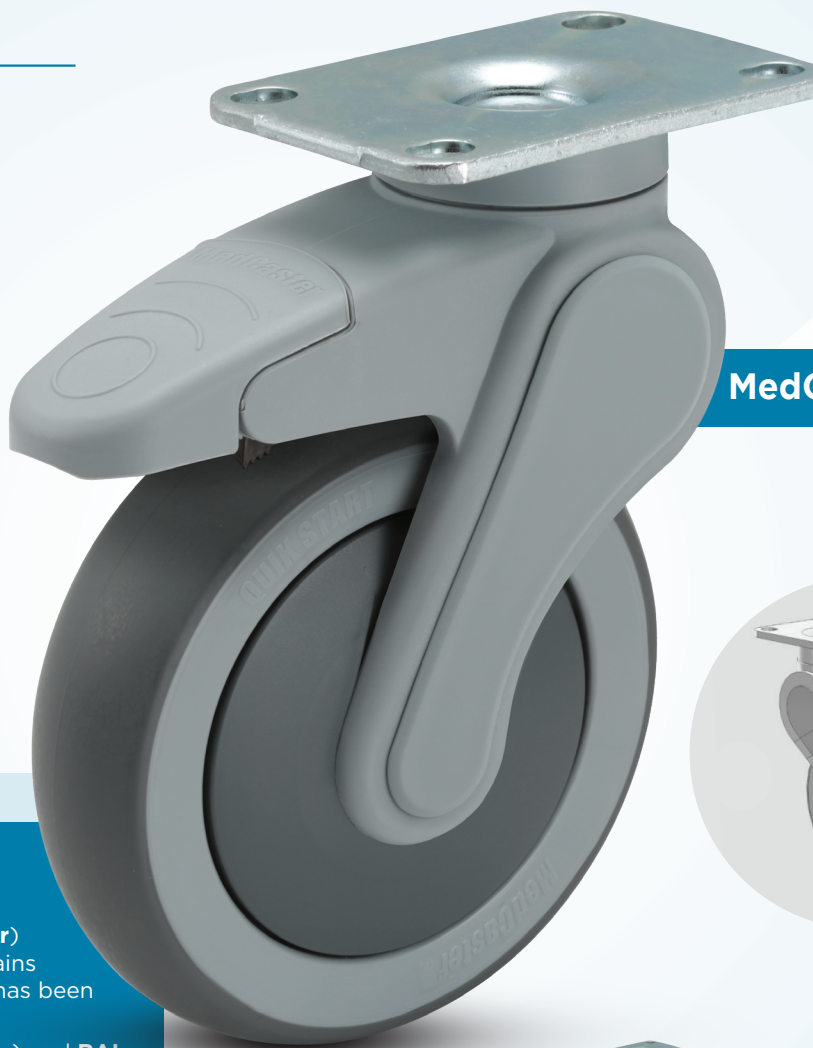
Make movement easier + improve **user satisfaction and safety** with Avant's *QuikStart* wheels

CLEAN + NO MAINTENANCE

Sealed bearings, non-marking wheels, and integrated thread guards **keep out dirt and entangling debris**

Features & Specifications

- Body constructed of glass filled nylon for high load ratings, durability, and long life
- QuikStart wheel (**70A durometer**) is quiet, non-marking and maintains smooth rolling even after brake has been applied for long periods of time
- Standard colors: **RAL 7001** (body) and **RAL 7011** (tread and thread guards); direction lock lever **RAL 6001**
- **Custom colors** available by special order
- Optional stainless steel, antimicrobial, and conductive models available by special order (minimums may apply)

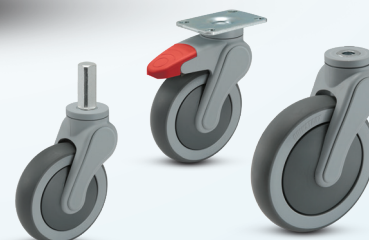


Explore Avant Online

[MedCaster.com/Caster/Avant](https://www.MedCaster.com/Caster/Avant)

for details, quote requests,
and to download

3D CAD Models and Datasheets



5" (125mm) version now available.
The rest of the Avant family
launching early 2018.

SEE OTHER SIDE FOR MORE INFO →

TOP PLATE MODELS

AVANT

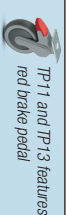
MedCaster



| WHEEL DIAMETER | TREAD WIDTH | LOAD CAPACITY | OVERALL HEIGHT | SWIVEL RADIUS | MODEL NUMBER (INSERT FITTING CODE) | Fitting Options |
|----------------|---------------|----------------|--------------------|-------------------|------------------------------------|---|
| 125mm (5") | 32mm (1 1/4") | 120kg (264lbs) | 169.5mm (6 11/16") | 102.5mm (4 1/16") | AV05QRP125SW | Top Plate: TP01, TP11, TP13 (Plate size and bolt hole patterns below) |



| WHEEL DIAMETER | TREAD WIDTH | LOAD CAPACITY | OVERALL HEIGHT | SWIVEL RADIUS | MODEL NUMBER (INSERT FITTING CODE) | FITTING OPTIONS |
|----------------|---------------|----------------|--------------------|-------------------|------------------------------------|---|
| 125mm (5") | 32mm (1 1/4") | 120kg (264lbs) | 169.5mm (6 11/16") | 102.5mm (4 1/16") | AV05QRP125TL | Top Plate: TP01, TP11, TP13 (Plate size and bolt hole patterns below) |



| WHEEL DIAMETER | TREAD WIDTH | LOAD CAPACITY | OVERALL HEIGHT | SWIVEL RADIUS | MODEL NUMBER (INSERT FITTING CODE) | FITTING OPTIONS |
|----------------|---------------|----------------|--------------------|-------------------|------------------------------------|---|
| 125mm (5") | 32mm (1 1/4") | 120kg (264lbs) | 169.5mm (6 11/16") | 102.5mm (4 1/16") | AV05QRP125DL | Top Plate: TP01, TP11, TP13 (Plate size and bolt hole patterns below) |

To order, insert blue fitting code:
Example: AV05QRP125TLTP01

STEM MODELS



| WHEEL DIAMETER | TREAD WIDTH | LOAD CAPACITY | OVERALL HEIGHT | SWIVEL RADIUS | MODEL NUMBER (INSERT FITTING CODE) | FITTING OPTIONS |
|----------------|---------------|----------------|--|-------------------|------------------------------------|---|
| 125mm (5") | 32mm (1 1/4") | 120kg (264lbs) | 162mm (6 3/8") Grip Ring: 165mm (6 1/2") | 102.5mm (4 1/16") | AV05QRP125SW | Round Stems: RS01, RS02, RS03 Square Stems: SQ01, SQ02 Grip Ring Stems: GR02, GR06, GR09 |



| WHEEL DIAMETER | TREAD WIDTH | LOAD CAPACITY | OVERALL HEIGHT | SWIVEL RADIUS | MODEL NUMBER (INSERT FITTING CODE) | FITTING OPTIONS |
|----------------|---------------|----------------|--|-------------------|------------------------------------|---|
| 125mm (5") | 32mm (1 1/4") | 120kg (264lbs) | 162mm (6 3/8") Grip Ring: 165mm (6 1/2") | 102.5mm (4 1/16") | AV05QRP125TL | Threaded Stems: TS02, TS03, TS04, TS05, TS06, TS07, TS21, TS22 Expanding Adapter Stems: XRN1, XRN2, XRN3, XRN4, XRR1, XRR2, XRR3, XRR4, XRR5, XRR6, XRR7, XRZ1 |

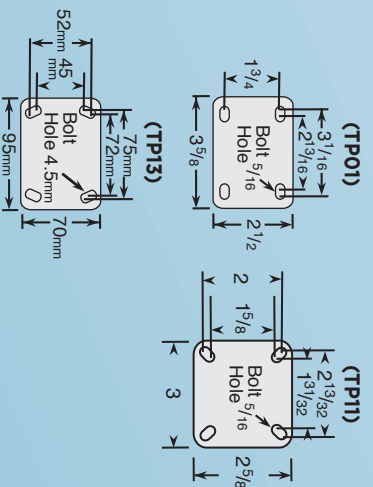


| WHEEL DIAMETER | TREAD WIDTH | LOAD CAPACITY | OVERALL HEIGHT | SWIVEL RADIUS | MODEL NUMBER (INSERT FITTING CODE) | FITTING OPTIONS |
|----------------|---------------|----------------|--|-------------------|------------------------------------|---|
| 125mm (5") | 32mm (1 1/4") | 120kg (264lbs) | 162mm (6 3/8") Grip Ring: 165mm (6 1/2") | 102.5mm (4 1/16") | AV05QRP125DL | Round Stems: RS01, RS02, RS03 Square Stems: SQ01, SQ02 |




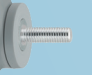
To order, insert blue fitting code:
Example: AV05QRP125SWTS02

FITTING OPTIONS

Plates



Round, Square and Grip Ring Stems

| | | | | |
|------|---|---|---|------|
| |  |  |  | |
| (RS) | | (SQ) | | (GR) |
| RS01 | 22mm x 45mm | | | TS02 |
| RS02 | 25.4mm x 45mm | | | TS03 |
| RS03 | 27.8mm x 45mm | | | TS04 |
| SQ01 | 3/4" x 2" (no holes) | | | TS05 |
| SQ02 | 1" x 1.75" (3 holes) | | | TS06 |
| GR02 | 7/16" x 1-7/16" | | | TS07 |
| GR06 | 7/8" x 2" | | | TS21 |
| GR09 | 845" x 2-3/16" | | | TS22 |
| | | |  | (TS) |

Expanding Adapter Stems

| (XRN) | (XRR) | (XRZ) |
|-------------|------------------|-------|
| XRN1 | 3/4" x 2-1/4" | |
| XRN2 | 13/16" x 2-1/4" | |
| XRN3 | 7/8" x 2-1/4" | |
| XRN4 | 1" x 2-1/4" | |
| XRR1 | 3/4" x 2-1/4" | |
| XRR2 | 7/8" x 2-1/4" | |
| XRR3 | 1" x 2-1/4" | |
| XRR4 | 1-1/8" x 2-1/4" | |
| XRR5 | 1-1/4" x 2-1/4" | |
| XRR6 | 1-3/8" x 2-1/4" | |
| XRR7 | 1-1/2" x 2-1/4" | |
| XRZ1 | 2 1/32" x 2-1/4" | |